

"Honoring Tradition, Celebrating Diversity, and Building a Jewish Future"

THE BUILDER



FROM THE RABBI LISTENING WITH COMPASSION

I hope that you and your family are enjoying some downtime over the course of this summer. At Beth El, we slow down a little bit—no school, no b'nai mitzvah—and then promptly move into high energy with the arrival of more

than four hundred campers and almost a hundred staff every day at Camp Kee Tov. Personally, it has been an eventful summer—we bought a house and moved to Berkeley, leaving San Francisco after twenty-six years; I took my brother (who is ill) on a cruise—an exhausting and rewarding experience for both of us; and, during August, our family will be building houses on a service trip to the mountains of Peru in honor of our thirtieth anniversary. While I certainly have had—and continue to experience—my share of disappointments and frustrations, I feel that my life is blessed and I am filled with gratitude.

Your life and the lives of fellow congregants are surely filled with stories of joy and celebration as well as those of pain, grief and loss. One family is welcoming a new family member or marking a graduation; another is facing a difficult diagnosis or the decline and death of a beloved relative. Sometimes all these things are going-on in the same house. Behind these public and visible moments, each of us—as individuals and as family members—are also moving through our own private celebrations and accomplishments as well as crises, disappointments and loss. Many Beth El members are un- or underemployed; others worry about their employment security or how they will afford to live in retirement.

Beyond our own personal circumstances, we share concerns for the wider community, our country and our world: budget cuts to school and the higher education system, the reduction of services to the disabled and the gridlock in our government are causes for concern. We are distraught at the level of violence in our city and in our world and worry about what is happening (or not happening) in Israel and the Middle East. Where do we “take” our various concerns, be they personal, communal or global?

Twentieth century Jewish philosopher Martin Buber taught that all holiness is rooted in the “life of dialogue.” For the last year, a small, emerging group of Beth El members have been learning about and practicing what I call “sacred

listening” as part of our congregation’s commitment to engage in congregation-based community organizing. The premise of this work is that through careful listening, we both build relationships with one another and, through trust and communication, become empowered to work together to effect change. Our Beth El listening campaign, Shema Beth El, links us to other local congregations through BOCA: Berkeley Organizing Congregations for Action, as well as the national efforts of the Reform movement, to help congregations engage in listening and organizing as part of our core commitment to tikkun olam, healing the world.

This Fall, every member of the Congregation will be invited to participate in a small, facilitated gathering or one-on-one meeting to discuss with others in our community what are the most important issues for you right now. We believe that these conversations are worthy ends in and of themselves; at a recent meeting of our volunteers, I was struck by the meaning and connections they had discovered by participating in these sessions. Shema-Listen! is at the heart of our Jewish practice; Buber taught that only through authentic listening and dialogue do we discern the presence of the Holy in the world. Thus, if these conversations only lead to a deeper understanding and connection between those present, we will have succeeded. But that is not our only goal. Our vision—and only later will we find out if we can do this—is that we will indeed discern common themes across the issues that our members raise and that, in turn, we will look for ways to transform our concerns into action. As we so often do in Judaism, we begin with an internal conversation—teshuvah, turning—which points to tikkun, transformation.

Beginning before Rosh HaShanah and continuing through the holiday season and into October, Beth El members will be inviting you to participate in these forums; dates and venues will be included in an upcoming mailing. I hope that you will take the opportunity to speak and to be deeply heard. If you would like to learn more about Shema Beth El or volunteer as part of this important project, please contact Maxim Schrogin (maximds@aol.com).

“This word is very close to you; in your mouth and in your heart that you may realize it...” [Deuteronomy 30: 14].

Rabbi Yoel Kahn

IN THIS ISSUE

President’s Message	p.2	Upcoming Events	p.6	Library	p.10
Youth & Family Education	p.3	From the Gift Shop	p.7	Thank You’s / Pantry Chug	p.11
Member Spotlight	p.4	Music	p.7	High Holy Days	p.12
Camp Kee Tov	p.5	Youth Groups	p.8	Tzedakah	p.14
Nursery School	p.5	Member Corner	p.9	Midrasha	p.17



FROM THE PRESIDENT

BUILD ME A SANCTUARY THAT I MAY DWELL AMONG THEM

Take a moment and imagine that you are in the desert among the Children of Israel shortly after the miraculous escape from Egypt. You witnessed the signs and wonders as G-d visited the ten plagues upon the Egyptians. You watched in amazement as the Yam Suf, the Reed Sea, parted so that you could walk safely across. You came to Mount Sinai where, amid thunder and lightning, you received the Law from G-d and Moses. At that point you would have had a pretty clear sense of G-d and of G-d's presence. And yet, shortly after the giving of the Law, G-d instructed Moses to tell the people: "Build Me a sanctuary that I may dwell among them." It is a curious instruction. G-d did not ask the people to build a sanctuary so that G-d could live IN it. G-d asks the people to build a sanctuary so that G-d can dwell within the people (B'Tocham – 'within them'). So after all of the previous demonstrations of G-d's presence, G-d wants the people to build a sanctuary so that they can feel G-d's presence close to them. Why do they need it?

The answer becomes clear as the Torah explains the process of building the Mishkan. The Torah starts by telling us that G-d instructs Moses to go to the people and ask that they bring an offering "from everyone that gives it willingly from their heart..." And the people respond. They bring so many gifts that Moses has to ask them to stop because they have more than is needed. Then we learn that everyone participates in the building process. Men, women and children make the materials, build the structure, fashion the ornaments and put it all together. Once it is completed, members of the community are appointed to care for the Mishkan. Why does everyone have to work so hard? G-d could have appointed only the priests to work on it. G-d could have assigned the effort to the leaders of the community. In fact, G-d could have simply created the Mishkan with a miracle, but instead G-d created an opportunity for everyone to participate. By taking that approach, the Mishkan truly belonged to the entire community because they all participated in creating it. When it is finally completed, the Mishkan becomes figuratively and literally the center of the community.

For those of you who do not know me (and those of you who do), my name is Daniel Magid and I am very excited to be the incoming President of Congregation Beth El. Why am I excited, you might ask. Is it the fame, fortune and the chance to get my picture on the Wall of Presidents? Naah.

I am excited to be the incoming President because, like the Mishkan, Beth El is a place that is continually built by the community, where miracles occur and where people make a difference. I love being a part of that. At Beth El, we can be part of the largest weekly lay-led congregational Torah study group on the planet – at a Reform synagogue! At Beth El, we get to support a Nursery School that is so warm, nurturing and popular that parents are joining the synagogue when their children are born in order to guarantee themselves a spot. At Beth El we can participate with dozens of other families in the Chug Mishpacha program, fulfilling the decades (if not centuries)-long dream of getting families to learn at shul together. At Beth El, kids look forward to our afterschool education programs – a miracle! At Beth El, over 800 campers come to Camp Kee Tov where they experience the joy of summer at the greatest Jewish day camp anywhere. At Beth El we have the opportunity to attend the monthly Project Reconnections program in which Jews from the Left, the Right and everywhere in between get together to respectfully and candidly share their heartfelt thoughts on Israel. Every month Beth El provides the homeless community with what is known as the best homeless meal around. And every week on Shabbat at Beth El, as well as on the holidays, we get to experience the wonderful music and innovative liturgy created by our rabbis that combines the best of our tradition with the beauty of modern thought and poetry. These are just a few of the miracles that occur at Beth El.

(continued on page 16)

CONGREGATION BETH EL
1301 Oxford Street
Berkeley, CA 94709-1424

Phone: 510-848-3988
Fax: 510-848-2707

Youth and Family Education Office
Direct Line: 510-848-2122

Nursery School Office
Direct Line: 510-848-9428

Camp Kee Tov Office
Direct Line: 510-848-2372

Midrasha Office
Direct Line 510-843-4667

CLERGY & STAFF

RABBI YOEL H. KAHN
Senior Rabbi
ext. 215 - rabbikahn@bethelberkeley.org

RABBI REUBEN ZELLMAN
Assistant Rabbi & Music Director
ext. 228 - rabbirz@bethelberkeley.org

NORM FRANKEL
Executive Director
ext. 212 - norm@bethelberkeley.org

DEBRA SAGAN MASSEY
Director of Education
ext. 213 - debra@bethelberkeley.org

BARBARA KANTER
Nursery School Director
ext. 219 - barbara@bethelberkeley.org

ZACH LANDRES-SCHNUR
Camp Kee Tov Director
ext. 217 - zach@bethelberkeley.org

JANICE BAKER
Accounting
ext. 210 - janice@bethelberkeley.org

DIANE BERNBAUM
Midrasha Director
510-843-4667 - diane@midrasha.org

ODETTE BLACHMAN
Gift Shop
ext. 240 - oblachman@sbcglobal.net

REBECCA DEPALMA
YAFE Administrative Coordinator
& Youth Group Advisor
ext. 214 - rebecca@bethelberkeley.org

JULIET GARDNER
Clergy Assistant
ext. 235 - juliet@bethelberkeley.org

LENORA O'KEITH
Administrative Coordinator, Main Office
ext. 211 - lenora@bethelberkeley.org

STEPHANIE POLLICK
Camp Kee Tov Admin. Coordinator
ext. 223 - stephanie@bethelberkeley.org

RABBI FERENC RAJ
Rabbi Emeritus
ferenc@bethelberkeley.org



LAUNCHING OUR YEAR AS A COMMUNITY-REJUVENATING FOR THE NEW YEAR

Debra Massey - Director of Education

This fall, Beth El's annual congregational shabbaton will be September 16th-18th at URJ Camp Newman. This fun-filled weekend is designed to bring our entire congregation together for a time of relaxing, connecting and rejuvenating. Our gathering is 10 days before Rosh Hashanah, so we will be focusing on how we can prepare for the upcoming holidays. We are thrilled to announce that Lehrhaus Judaica's Rabbi Peretz Wolf Prusan and songleader Isaac Zones will be returning to join us for our weekend getaway!

This is the 5th annual shabbaton for Beth El, but our first time ever at URJ Camp Newman. There are a number of reasons we wanted to try out this new location, and we hope that you will agree with us:

1. URJ Camp Newman is a Jewish site. It is the camp of the Reform Movement, and hopefully one with which you will become familiar! Throughout the camp, there are Jewish symbols, murals, signs, and objects. What a treat to be at a place that reflects our Jewish tradition and values!

2. My hope is that our children (and families) will be inspired by the weekend at Camp Newman and will consider coming to camp for a part of their summer in the future. My personal experience growing up at URJ Camp Swig had an incredible impact on me, and I encourage all families to consider Jewish overnight camp.

3. Housing options! Camp Newman has multiple cabins that are semi-private and will enable families to have their own space, while still in a communal setting. Our feedback from

last year was that the housing was not adequate, so we are hoping that this new facility will provide new options that meet all of our attendees needs.

4. Swimming pool, climbing tower, organic garden, sports field, hiking trails and more! The facilities at Camp Newman are top notch recreational facilities that will give us opportunities for new experiences for all.

In addition to our new location, the shabbaton will offer programming for Beth El congregants of all ages. For the first time ever, we are offering teens the opportunity to participate in a Leadership Training Institute (LTI) where a select group of teens will get to come on the weekend for free in exchange for working as counselors for the younger participants. In addition, they will have a leadership training workshop while getting to have fun and relax together. For information about applying for the LTI, please contact Rebecca DePalma at rebecca@bethelberkeley.org.

Just as we did last year, our 7th graders will have their own parallel retreat at Camp Newman. Our 4th, 5th and 6th grade youth groupers are invited to come up with their parents, or on their own as youth group participants. Families with young children will be excited to know that members of our Camp Kee Tov staff will be joining us for the weekend to help keep the 'ruach' alive!

It's time now to sign up for the shabbaton! Prices are subsidized for members; prospective members are also welcome to join us! Sign up today at www.bethelberkeley.org! Rejuvenate for the New Year!

EDAH - AN AFTERSCHOOL PROGRAM AND A WHOLE LOT MORE!

Beth El is excited to announce that we are offering a new model of complementary Jewish education! Edah is a community program run by the Jewish Federation's CJLL and will incorporate our Thursday Kadima education classes. Edah will be held at Beth El and offers programming from 1:30 - 5:30 pm daily. Physical activity, arts, gardening, cooking, Hebrew language, Israel and Jewish text study are integrated throughout the program.

Students are expected to participate at least 3 days/week. Please visit the Edah website for more information and registration: www.edahcommunity.org, and feel free to contact Debra Massey at 510-848-2122 x213 or debra@bethelberkeley.org if you have any questions about this new educational model.

Register today for the 5772 School Year!
 Visit www.bethelberkeley.org for more information.

MEMBER SPOTLIGHT



In each issue, we will profile a Beth El member or family to get to know them better and learn about their experiences at Congregation Beth El. This issue, we'll get to know the Fogelman family (Michael, Anna, Eli and Naomi) and learn about their experience at Chug Mishpacha (our Shabbat Family School).



Chug Mishpacha has served as a peaceful placeholder of sacred family time for the Fogelman family this past year. The family gravitated toward Chug Mishpacha rather than the midweek Kadima because they wanted to learn together and find their connection to Judaism both as individuals and as a family unit. Anna Fogelman-- an active preschool parent, tot Shabbat volunteer, and Shabbaton committee member-- reflected on her childhood Jewish education experience in San Diego as disappointing- "I think the kids who I went to Hebrew School with were very different from my friends at school. The social circles didn't overlap, so for me 4th grade was kind of the end of my formal Jewish education for a long period in my life." Anna rediscovered Judaism in College and since then has been looking for opportunities to further her Jewish learning.

Chug Mishpacha offers this intellectual community for both parents and their children. Anna comments "Our favorite aspect of learning alongside our children is we all get to engage in topics we haven't thought about in a long time. The

Chug curriculum is multidimensional- involving different family members in different ways, which is a very different experience than if my son were to attend a traditional religious school, and I would only hear the report back from Eli about what he had learned that day."

Anna is grateful for the creative and cohesive programming, "To actually have someone programming for the kids with the opportunity to talk about ethics and values is really special, for instance getting to do art projects with your kids just feels so rich." The Fogelman family believes the highlight of the curriculum this year and the lesson that has resonated most with their family was the unit on family history- "My 5 year-old, who has eight fully involved grandparents, made this family tree that was a beautiful piece of art. It gave him and our family a chance to reflect on who he is, who makes him who he is, and where he came from. This project was a meaningful way for our family to connect and reflect both as individuals and as a whole." In addition to the innovative and exciting educational component of the program, Chug Mishpacha in nature is very focused on community building and strengthening family ties to the local Jewish community. Anna describes the Chug Facebook group- they were sharing things like hamentashen recipes, and notifying us of various lectures and events outside of the Beth El community...it was people you kind of knew posting about a shared common interest, which was a wonderful foundation and starting place for a connection between families."

The Fogelmans noticed the Saturday time commitment to sometimes be difficult, however they saw that participation in Chug really enriched family life and decided to make the time commitment a family priority. "I think that in these busy times, a weekend morning commitment is actually just huge. Once we would all get out of the house and arrive there every week, we would realize how valuable the program time is to both the individual and family unit. Now especially, family activities can be much more about entertainment than content. I feel that it's easy to get stuck in a habit of entertainment-based family activities on Saturdays where you often lose the value of spending quality family time together, centered on something content-based. What I like about the Chug commitment and Saturday morning routine is you don't need to have a 'ticket' to get in."

Anna strongly agrees their time spent at Chug this past year has meant a lot to the family- "Our Jewish life is in process and has been for several years, so Chug helped expand our Jewish vocabulary as a family, adding another layer of shared Jewish life and experiences with my kids."



SUMMER IN FULL SWING

Zach Landres-Schnur - Camp Kee Tov Director

I spoke with a prospective camper in January, eager to try camp for the first time. She was excited about being outside with her friends, learning new Hebrew songs and participating in the World Famous Messy Day.

Hearing this in January, when it's cold, wet and dark by 5:00 pm, it's hard to imagine a summer in full swing. But last week I saw the same girl, now a happy, ruach-filled Kee Tover and it hit home that after months and months of preparation and anticipation, camp is finally here!

With 400 first-session campers, nearly 100 staff and ruach that can go for days, what was once a quiet Congregation Beth El is buzzing with the energy that Kee Tov brings to so many!

Our first week of camp, while fun and energetic as any Kee Tov week, seemed a real life version of the Passover story with our own version of the 10 plagues. We had bees (locusts), rain (darkness), lice (lice)...we were expecting frogs come Shabbat!

But with any challenge, the Kee Tov staff responds in a HUGE way! One great trait of any Kee Tov counselor is being able to improvise and to do so quickly and while under a lot of stress.

With each plague...err...challenge thrown our way, the staff responded quickly, confidently and professionally, maintaining a great Kee Tov day for the campers who – more or less – didn't know there was anything out of the ordinary to begin with!

And once we escaped the plagues, the sun shone bright again, reminding us that we are in the midst of a Kee Tov summer, the best time of the year!

Congratulations Camp Kee Tov!!!

Camp Kee Tov was recently named the Best Summer Day Camp for Kids by the East Bay Express. This honor was accompanied by a glowing review, which is available online at www.campkeetov.org. Mazel Tov!

NURSERY SCHOOL



BETH EL & ONESIE TWOSIE

Barbara Kanter - Nursery School Director

Nursery School presents its tzedakah money to local nonprofit

With serious faces but wiggly bodies, the children presented lovely decorated envelopes with the money that had been collected throughout the year at their weekly Shabbat tzedakah collection. Founder of Onesie Twosie, Laurie Marson, had come to the Alef and Bet classes at the beginning of the year to explain Onesie Twosie. The children were enthusiastic and understood the concept of some babies having a lot of "stuff" and others having very little. This year has been the most successful tzedakah collection that we have ever had. At the All School Shabbat celebration Laurie accepted the money and showed the children some of the little outfits that Onesie Twosie gives to needy new babies. The response was lots of oohs and aahs. She then gave the children popsicle stick animal puppets that were received with great enthusiasm. We look forward to continuing our Onesie Twosie tzedakah project!



MENTAL ILLNESS & OUR COMMUNITY

Tuesday, August 30 • 7:30 pm

Many families and members of our Beth El synagogue community live with or are touched by someone who struggles with mental health. At Beth El, we are committed to making our community a sacred space where everything that is important in our lives can be brought and where everyone is welcome. How can we reach out to people living with or whose lives are touched by mental illness? What can we do differently to make our synagogue a safer and more welcoming place? You are invited to join Rabbi Yoel Kahn at an exploratory conversation about destigmatizing mental illness and creating more space for discussion about -- and integration of -- people living with mental health issues. For more information or to RSVP, please contact Juliet Gardner in the Beth El office at juliet@bethelberkeley.org

BETH EL NIGHT AT THE THEATER

Special discount for the Beth El community*

The Mad 7: A Mystical Comedy with Ecstatic Dance

at The Marsh Berkeley - 2120 Allston Way

Thursday, September 15 • 8:00 pm

Yehuda Hyman, one of America's great storytellers, is a playwright, actor, poet, choreographer and dancer whose work explores the intersection of theater, dance, poetry, myth and mysticism. He will perform *The Mad 7*, a modern-day riff on *The Seven Beggars*, a Jewish folktale written more than two centuries ago by Rabbi Nachman of Breslov. Written by Hyman and directed by Mara Isaacs, *The Mad 7* tells the epic tale of Elliott Green, a San Francisco office drone turned reluctant hero, who embarks on a strange and mystical quest. Through music, dance and uniquely personal storytelling, Hyman offers a hilarious, offbeat and moving story of spiritual awakening and self-discovery.

The Jerusalem Post says, "Hyman's one-man performance piece transports the Orthodoxy of that Hasidic tale to secular America...his transformations reveal the essence of character in simple choreographic strokes."

After the show, Beth El's Rabbi Yoel Kahn and Rabbi Reuben Zellman will join Yehudah for an on stage dialogue about spirituality, mysticism, performance and language. The Beth El community receives a special rate of \$10 (for the Thursday performance only). For tickets, go to www.themarsh.org (select "CBE Special" and enter code BETHEL) or call the box office 415-282-3055 (Mon-Fri, 1:00-4:00 pm; additional fees apply).

6 | the builder: fall 2011

AUTHOR READING:

MICHAEL DAVID LUKAS READS THE ORACLE OF STAMBOUL



Wednesday, September 21 • 7:00 pm

Join us for author Michael David Lukas' reading of his first novel, *The Oracle of Stamboul*. Michael attended Beth El Religious school, became a Bar Mitzvah here and is a Midrasha graduate. He returns for an intimate reception, reading, and book signing.

The Oracle of Stamboul is a historical novel about a preternaturally intelligent Jewish girl who becomes an adviser to the Ottoman sultan and, through her advice to him, changes the course of history. Reviewers call the book "an extraordinary debut." This lyrical, richly detailed portrait of a time and place (Istanbul at the end of the Ottoman empire) is also a compelling tale of an extraordinary little girl caught up in the tides of history. This book will delight readers of all ages and tastes -- literary without being impenetrable and poetic without being needlessly ornate.

A graduate of Brown University and the University of Maryland, Michael's writing has appeared in VQR, Slate, National Geographic Traveler and Georgia Review.

Copies of The Oracle of Stamboul will be available for purchase at the event. Cosponsored by Congregation Beth El and Midrasha in Berkeley.

LUNCH & LEARN SERIES

In pursuit of life long learning...

A Look at Relationships Through the Lens of the Myers-Briggs Type Inventory

Presented by: Cathy Stevens, Mediator and Facilitator

Thursday, September 8 • Noon

Sukkot - Historical Meaning and Current Practices

Presented by: Rabbi Bridget Wynne

Thursday, October 13 • Noon

Please bring a bag lunch. Dessert and drinks will be provided. For more information, please contact Beverly Eigner at lunchandlearn@bethelberkeley.org or call 510-549-3800. Lunch and Learn events are open to the entire congregation and community. Bring a friend!

One of the greatest gifts the Fall brings us is the opportunity to create a new beginning with the High Holy Days (“Chaggim”). In preparation for the High Holy Days, the Beth El Gift Shop has stocked itself with a stunning variety of Tallitot and Kippot for congregants to come prepared to begin the new year in earnest. Come to the gift shop early to take advantage of our tasteful wide selection and wear religious attire that is comfortable because it fits properly and helps set your focus on self-reflection.

We also carry a selection of Torah commentary to help start your new year off right as the our annual cycle of reading the Torah begins again! Make this the year that you study the Torah with your own copy!

It’s also the time to take stock of other religious items. When was the last time you checked the parchment inside the mezuzah on your front door? Maybe you don’t have a mezuzah with parchment on your front door yet? There’s nothing like the present time to hang a mezuzah and check off this mitzvah from your list of things you’ve been meaning to do!

Need a gift for a summer wedding? Come to the gift shop for the classy or classic gift for the bride and groom. We carry more than Judaica for every occasion. We carry everything you need for one-stop shopping for gifts, with a particular emphasis on high quality, artistic gift items from Israel.

Come visit the gift shop anytime the front office is open for business. If you require special assistance or personal shopper help, please phone Odette at: 510-526-4917 or Robinn at: 510-524-2297.

Odette and Robinn



MUSIC

Join the Music for High Holy Days!

HIGH HOLY DAYS CHORUS BEGINS AUGUST 17TH!

Rehearsals: Wednesdays, August 17 - September 21 & October 5 • 7:00-8:45 pm

There’s no better way to prepare your mind and spirit for the High Holy Days. We’ll be leading the congregation in some of our tradition’s most beloved music from Jewish cultures around the world. We work hard and have a lot of fun in a lively and supportive atmosphere. The chorus is always open to new singers--any member of Beth El who loves to sing is encouraged to join us! Musical background is not necessary. The commitment is one “season” at a time--you can sing with the chorus for the High Holy Days without committing to any other time of year. In addition to sheet music, rehearsal CDs will be available to all singers. Questions? You are encouraged to contact Rabbi Zellman, Beth El’s Music Director: rabbirz@bethelberkeley.org, 510 848-3988 ext 228.

TORAH AND HAFTARAH CHANTING

There are still a few open slots for chanters during the holidays, especially for Sukkot (October 13 in the morning) and Simchat Torah (October 20 in the evening.) Texts, recordings and photos of your section in Beth El’s Torah scroll are available to help you prepare. If you’re interested in this wonderful mitzvah, contact Emily Marthinsen: emilymarthinsen@comcast.net

OTHER MUSICAL OPPORTUNITIES FOR THE HIGH HOLY DAYS

Interested in playing an instrument? Leading the congregation in your favorite holiday melody? If you have other ideas about participating musically during the holidays, Rabbi Reuben would love to talk with you--give him a call or an e-mail.

LEADERSHIP TRAINING INSTITUTE

Rebecca DePalma - Youth Group Advisor

Our teens participate as community leaders in many ways. They are Camp Kee Tov counselors, madrichim (staff assistants) at YAFE, High Holy Day Torah chanters, and board members of youth groups. We admire the incredible work that they do in our community.

We are excited to help cultivate their leadership skills by offering a Leadership Training Institute for our 8th-12th grade students at the Congregational Shabbaton, September 16th-18th at Camp Newman. This opportunity will include:

- Peer-lead programming to build leadership skills
- Opportunities to run children's programming
- Opportunities to run activities for peers
- Weekend away at Camp Newman
- Meals with the Beth El community
- Shabbat Service leadership opportunities
- Community Social Action Project

Teens can apply to attend this excellent program at www.bethelberkeley.org/youthgroups. Camp Kee Tov staff will be chaperoning this event. We will have access to ropes courses, the Camp Newman pool and waterslide and much more. Please feel free to contact me at rebecca@bethelberkeley.org or 510-848-2122 ext. 214 if you have any questions. We look forward to a fantastic retreat.

Welcome Miss President!

Our new Sababa president, Michelle Schiff has been on the Sababa board for the last two years. Originally she was the sixth grade class representative and last year she was the membership vice-president. This year she's excited to lead Sababa as the president. She is also looking forward to starting Midrasha and working as a madricha at Beth El.



Outside of Sababa, Michelle sings in the band Halo Gut Flower and enjoys helping people and cooking. She draws anime and she loves music. This summer she's enjoying both sessions of Chalutzim at Camp Kee Tov. She's excited to keep that Camp Kee Tov ruach all year round at Sababa, and hopes all our 6th to 8th graders will find fun ways to participate!

Save the Dates!

5772/2011 Ruach Calendar

Friday, September 16-18

Ruach Retreat at Camp Newman (see below)

Saturday, October 15

Ruach Havdallah in the Sukkah

Sunday December 11

Ruach Chanukah Celebration

RUACH RETREAT AT CAMP NEWMAN

September 16 - 18, 2011

Our 4th, 5th & 6th graders are welcome to attend this event unaccompanied or with their families for a weekend full of Kee Tov style fun. There will be campfires and s'mores, song sessions, swimming pool with waterslide, nature hikes, low ropes course and much much more. There will be student only cabins available, and parents are welcome to come and camp or stay in separate cabins depending on their preference.

Sign up at www.bethelberkeley.org/youthgroups!



"Like" Beth El on Facebook!

facebook.com/bethelberkeley

And while you're at it, check out these other awesome pages as well!

Sababa Youth Group

BEY - Beth El Youth

Camp Kee Tov

B'NAI MITZVAH



The congregation is cordially invited to attend as our son, **Jacob Amme** is called to the Torah as a Bar Mitzvah on Saturday, August 27, 2011 at 10:15am. Kiddush will follow. Susan Camel & David Amme



The congregation is cordially invited to attend as our daughter, **Rebecca Friedman** is called to the Torah as a Bat Mitzvah on Saturday, September 3, 2011 at 10:15am. Kiddush will follow. Matthew & Lisa Friedman



The congregation is cordially invited to attend as our son, **Adin Krebs-Oppenheimer** is called to the Torah as a Bar Mitzvah on Saturday, October 22, 2011 at 10:15am. Kiddush will follow. Amy Oppenheimer & Jennifer Krebs



The congregation is cordially invited to attend as our daughter, **Laurel Richardson** is called to the Torah as a Bat Mitzvah on Saturday, October 29, 2011 at 10:15am. Kiddush will follow. Aaron Richardson & Debra Kaufman



CONGRATULATIONS TO THE 2011 CONFIRMATION CLASS

Left to right: Rabbi Kahn, Seamus Nelson, Sam Roditti, Jacob Pearlstein, Alana Levine-Gorelick, Noah Amme, Rachel Graup, Harry Pollack, Lauren Hoffman, Rabbi Zellman.
Not pictured: Milo Dubinsky

WELCOME TO OUR NEW MEMBERS:

Susan Amdur

Josh & Lindsay Burell

Sara Gemes

Marlene Getz & Bob Gilden

Alex & Inna Goldberg

Kathryn Levenson

Jeff Seideman & Elisabeth Wechsler

Marissa Wolf

NEW BOOKS IN THE LIBRARY

Scott Spear - Library Chair

Hurrah! Thanks to a thoughtful person, the library for the first time ever has a complete set, in 22 volumes, of the Babylonian Talmud, a new revised English translation, with commentary, edited by Jacob Neusner but the work of many American Jewish translators, all Talmud scholars. These volumes are in the reference section but may be checked out.

What can one say about this sublime work, of which nothing is more Jewish? This column has not the task of answering that question, but you are urged, or at least invited, to dive in—or dip in a toe, anyway. Have you not meant to, someday?

That toe dip might be less a matter of apprehension if you consult one of the books in the library meant to introduce you to Talmud. Here are a few of them, varying in focus, depth and range:

Introduction to the Talmud and Midrash, by Strack and Stemberger, is required reading in any college or seminary introductory course on this subject. It is a thorough introduction to the history, the personages, and all extant works of classical rabbinic literature, with short analyses and descriptions.

The Cambridge Companion to Talmud and Rabbinic Literature, ed. by Charlotte Fonrobert and Martin Jaffee, is a collection of essays by an international group of scholars on the history, cultures, backgrounds, and different aspects of the literature. This too is very thorough.

Talmudic Stories: Narrative Art, Composition and Culture, by Jeffery Rubenstein, relates five stories from Talmud, with considerable commentary, from among the hundreds of such stories scattered throughout Talmud. (There is only one tractate—Bekhorot—which has no stories at all; it's halakha all the way through.)

Following their release from Nazi camps, Elie Wiesel and Emmanuel Levinas separately studied Talmud in Paris with a master, Chouchani, whose methods were very different from the

usual. Wiesel wrote about Chouchani in *Legends of Our Times*. The methodology is practiced by Levinas in *Nine Talmudic Readings*, *Beyond the Verse: Talmudic Readings and Lectures*, and *In the Time of the Nations*. In these pages, Talmud is not a museum exhibit but rather a living modern work on ethics and justice.

Swimming in the Sea of Talmud, by Michael Katz and Gerson Schwartz, a short book, is said by Ismar Schorsch to be a good jumping-off place for the daunted, and Rabbi Joseph Telushkin calls it a “wonderful idea wonderfully executed.” Two other short books, somewhat dated but valuable, are *The Talmud: Selected Writings*, by Ben Zion Bokser and Baruch Bokser, and *The Essential Talmud*, by Adin Steinsaltz. The Bokser book has short selections from the various tractates and a long introduction. Steinsaltz gives a summary of Talmudic views on various topics, is thus his own interpretation. The Encyclopedia Judaica articles are excellent.

In the children's library is *Learning Talmud*, by Jacob Neusner, meant for young adults.

In Tr. Mekilta of the Jerusalem Talmud is written, “In the future, the Holy One, Blessed be He, will be at the head of every dance troupe.” Thus, *Seeing Israeli and Jewish Dance*, ed. by Judith Ingber, is relevant to Talmud. This wide-ranging book with many photos combines dancers' and scholars' views of Jewish dance of many Jewish communities over many epochs but with emphasis on the present. In Tr. Ketubah of the Talmud it is stated that it is obligatory to dance at a wedding.

Balancing the Mechitza: Transgender in Jewish Community, ed. by Noach Dzmura, is a collection of essays by 28 writers on the title's topic. Many are known to us at Beth El, e.g., Rabbi Reuben Zellman, Rabbi Jane Litman, Rachel Biale, Rabbi Maggie Wenig, Maggid Jhos Singer. Charlotte Fonrobert, of Stanford, and Rabbi Zellman write on the Talmudic aspects of the topic, and Judith Plaskow looks at classical rabbinic literature generally. The book is thorough.

THANK YOU RABBIS AND CONGREGATION BETH EL

On June 11, 1961, we were married in Congregation Beth El at Arch and Vine. On June 11, 2011, our 50th anniversary was marked and celebrated at Congregation Beth El. Stan led Torah study and we were honored during the services in the Sanctuary.

We want to thank Rabbis Kahn and Zellman as well as the Beth El community for making our simcha a most memorable occasion.

-Stan and Miriam Schiffman

THANK YOU TO OUR VOLUNTEERS!

Many members have contributed to our community activities over the past several months.

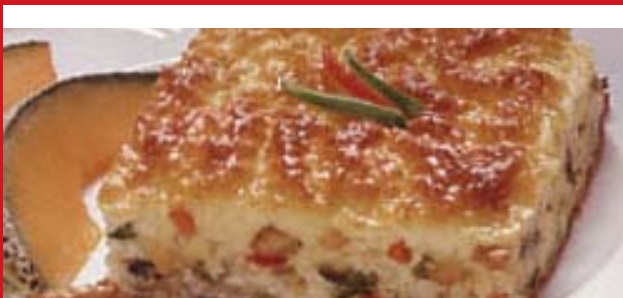
We are grateful for their efforts, big and small. Among the many individuals we'd like to thank are:

- The Ganes Family for shopping for the Homeless Meal when items don't get delivered
- Florence Lewis for organizing the library collection, making it a more attractive space, and recruiting additional Library Committee members
- Jerry Weintraub for collecting programming ideas for Simchat Torah from Torah Study
 - Max Cooperstein for organizing greeters for Friday night Shabbat services
- David Rothenberg for his percussion talents at the Yismechu Shabbat chanting service
- Karen Frasier-Kolligs for her hard work and dedication in chairing the first year of the new Youth Committee
 - The Shabbat Summit attendees, 40 people who gave a Saturday afternoon to listen, share ideas and discuss possibilities for changes to our Saturday Shabbat activities
 - Lilah Hecht for baking a cake for the Tucker baby naming
- The supporters of the July 9 oneg: The Pantry Chug for providing sweet treats; Ann Sussman, Janet Byron and Ruth Spear on clean-up duty; and Lisa Feldman, who took the tablecloths home to wash
 - Michele Horaney for reviewing Ritual Committee flyers so quickly
 - Sara Sarasohn for her help editing the Ritual Committee flyers and writing the web text and ongoing coordination of volunteer service leaders
- Harry Marguilus, for asking a question at his Chug meeting which generated a lot of warm response as part of the listening campaign
 - Jocelyn Newman and Tony Hecht for chanting Torah at Shabbat services
 - Beverly Eigner for sewing a High Holy Days ark curtain and bimah cover
 - Ruth Ehrenkrantz for her exceptional leadership of the Ritual Committee
 - Ken Kirsch for his skillful pruning of one of our beautiful trees at Beth El
- Our wonderful recent service leaders: Debbie Leon, Dennis Corburn, Sara Sarasohn, Dan Magid, Katherine Haynes Sanstad and Arella Barlev

If you know of individual efforts you would like to publicly thank, please email them to thankyou@bethelberkeley.org!



CHILE-EGG PUFF
makes a 9x13 pan



FROM THE PANTRY CHUG

10 eggs

½ cup all-purpose flour

1 t baking powder

½ t salt

2 C (16 oz.) low-fat cottage cheese

4 cups (1lb.) shredded jack or mozzarella cheese

2 cans (4 oz. each) diced green chiles

Preheat oven to 350. In a medium-size bowl, beat eggs until light and lemon colored. Add flour, baking powder, salt, cottage cheese and jack cheese; blend until smooth. Stir in chiles.

Pour mixture into a well-buttered 9x13 inch baking pan. Bake in the preheated 350 oven for about 35 minutes or until top is browned and center appears firm. Serve immediately. Makes 10-12 servings.

For more information or to join the Pantry Chug, contact Debbie Leon at pantrychug@bethelberkeley.org!

HIGH HOLY DAYS 5772

SELICHOT (SEPTEMBER 24 • 8:30 PM)

Dance performance "Shomer" - choreographed by Valerie Gutwirth

Selichot, the Saturday evening before Rosh Hashanah, begins the High Holy Day season. Following dessert and Havdalah, Beth El's Valerie Gutwirth will present Shomer ("Guardian"), an original composition exploring the connections between domestic chores, making and keeping lists, and synagogue practice. Following the performance, the melodies of the season will enter as we mark the beginning of the High Holy Days with our Selichot service.

ROSH HASHANAH (SEPTEMBER 28-30) & YOM KIPPUR (OCTOBER 7-8)

For the evenings and mornings of the High Holy Days, we hold two services. The Early Service is shorter and emphasizes contemporary music and English settings of the liturgy. The Late Service features more Hebrew and the historical music of the season. New this year are parallel programs during the times of the main services specially targeted to school-age (3rd-7th grade) kids. Childcare is offered at every service for children from preschool to 2nd grade; childcare is free with advance registration. Rosh Hashanah afternoon will conclude with Tashlich in Live Oak Park and Yom Kippur afternoon features a variety of workshops that give us the chance to contemplate, study, and sing together. Yom Kippur concludes with Yizkor, Ne'ilah (closing) Service and our annual Break-the-Fast.

High Holy Days information and reservation pamphlets have been mailed. Whether you are completing it online or on paper, please consider volunteering as an usher, greeter, service participant or other volunteer-mitzvah role.

SUKKOT (OCTOBER 12-20)

Sukkot, the Festival of Booths, is a holiday for welcoming guests (ushpizin), spending time in a sukkah and appreciating the bounty of our fall harvest. There are many activities happening in Beth El's sukkah and in the sukkot of our members. Your High Holy Days tickets will also include information about our varied Sukkot programming this year. If you are interested in hosting a gathering in your sukkah on Sunday, October 16, or willing to help decorate Beth El's sukkah on Tuesday, October 11, contact Ruth Ehrenkrantz at ruthehren@comcast.net.

SIMCHAT TORAH (OCTOBER 21)

At Simchat Torah, the holiday of Rejoicing with the Torah, we read the end of the Torah and then begin again. This year, our celebration has been expanded to serve children and adults, with parallel activities for each group. New this year at Simchat Torah is an adult study session and, also just for adults, home-made schnapps! While the adults are studying, children and their parents will gather for their own activity including the traditional consecration ceremony which welcomes our new students into a lifetime of Jewish learning. Beginning at 7:00 pm, the whole congregation will gather together for the Torah reading, hakafot (processions and dancing with the Torah), Israeli folk dancing and Klezmer music. As in years past, we will unroll the entire Torah scroll around the room.

***The deadline to place your ticket request is Wednesday, September 7.
Please visit www.bethelberkeley.org to complete your
ticket request online or to download ticket request forms.***

SCHEDULE OF SERVICES

<u>Selichot</u>					
Saturday, September 24		8:30 pm		<u>Yom Kippur (continued)</u>	
				Youth (3 rd - 7 th grade) Service & Program	11:30 am
				Afternoon Discussions & Programs	2:15 pm
				Family Service (Children K - 2 nd grade)	3:15 pm
				Afternoon Discussions & Programs	4:15 pm
				Mincha (Afternoon Service)	4:15 pm
				Yizkor Circle	4:15 pm
				Yizkor (Memorial) Service	5:30 pm
				Ne'ilah followed by Break Fast	6:15 pm
<u>Rosh Hashanah Evening</u>				<u>Sukkot Evening</u>	
Wednesday, September 28				Wednesday, October 12	
Early Service*	6:30 pm			Festival Evening Service & Potluck Dinner	6:15 pm
Late Service*	8:30 pm				
<u>Rosh Hashanah</u>				<u>Sukkot Day</u>	
Thursday, September 29				Thursday, October 13	
Early Service*	9:00 am			Festival Morning Service & Lunch	10:15 am
Tot Service & Program	10:30 am				
Late Service*	11:30 am			<u>Sukkot / Shemini Atzeret - Yizkor</u>	
Youth (3 rd - 7 th grade) Service & Program	11:30 am			Wednesday, October 19	
Tashlich and Picnic	2:15 pm			Yizkor Circle	6:15 pm
Family Service (Children K - 2 nd grade)	3:15 pm			Yizkor Service	7:30 pm
<u>Second Day Rosh Hashanah</u>				<u>Simchat Torah / Consecration</u>	
Friday, September 30				Thursday, October 20	
Community Service & Lunch	9:30 am			Simchat Torah Dinner	5:30 pm
				Simchat Torah Adult Study	6:15 pm
<u>Yom Kippur Evening - Kol Nidre</u>				Consecration & Service	6:15 pm
Friday, October 7				Simchat Torah Celebration	7:00 pm
Early Service* (Note: Earlier start time!)	6:00 pm			<i>(Dancing, Torah Reading and more!)</i>	
Late Service*	8:30 pm				
<u>Yom Kippur</u>				*indicates tickets are required	
Saturday, October 8					
Early Service*	9:00 am				
Tot Service & Program	10:30 am				
Late Service*	11:30 am				

CHILDREN'S PROGRAMMING

We are offering new options for families with children this year:

- **NEW! Youth Torah Study during the Early Service.** Children attending the Early Morning Service will join together midway through the service and continue with a "youth only" Torah Study and project.
- **NEW! Youth Service and Program for 3rd - 7th graders during the Late Morning Service.** This is an opportunity for our youth community to gather together for a worship experience that is geared to their age. A holiday-related project will follow.
- **Family Services** are offered in the afternoon at 3:15 pm in the sanctuary. They are designed for younger elementary school-age children (K - 2nd grade). These services are led by Josh Miller and Rabbi Kahn along with their friends Rav Yankel and Chaya.
- **Tot Services** are brief family services held outside under the oak trees at 10:30 am. They are geared towards our preschool age children and their families.
- **Complimentary Childcare**** is offered for children pre-k through 2nd grade. Childcare is run by our Camp Kee Tov staff and incorporates activities that reflect the holiday themes. Childcare begins 15 minutes before the start of each service and ends 15 minutes after each service concludes. Please note that we do not offer diaper changing services.

****Advanced Registration Required. Please visit www.bethelberkeley.org to download registration forms.**



AARON PLISHNER LIBRARY FUND

Howard & Alice Gruber *in memory of Esther Gruber*
Karen & Joel Zeldin *in memory of Isadore Dash*

ARJMAND ADULT EDUCATION FUND

Towfig & Beryl Arjmand *in memory of Rachel Pirnazar*
Anna Mantell & Bob Goldstein *in honor of Harry & Marilyn Margulius' 50th wedding anniversary*
Anna Mantell & Bob Goldstein *in honor of the birth of Abigail Rose Segal, granddaughter of Barbara & Steve Segal*
Phyllis Zisman *in honor of Harry & Marilyn Margulius' 50th wedding anniversary*
Phyllis Zisman *in memory of Dorothy Scherr Wollins*
Phyllis Zisman *in memory of Hsiao-ti Catherine Falcone*

ANNUAL CAMPAIGN 5771

Fran Alexander
Adele Amodeo
Carol Brownstein & David Lieberman
Mona Cain
Bruce & Susan Carter
William & Mary Ellen Doniger
Pauline Hale
Batya Kalis
Peggy & Michael Lipson
Cameron Moore & Leslie Reckler
Lloyd Morgan
Howard Pollick & Linda Streaan
Mayer & Linda Riff

BUILDING FUND

Anna Mantell & Bob Goldstein *in honor of Miriam & Stan Schiffman's 50th wedding anniversary*
Nancy Turak & Marc Davis *in honor of Joanne Backman for her service to Beth El*

CHEVRA KADISHA FUND

Estie & Mark Hudes *in memory of Gideon Glick*

DAVID SOL COTTON MEMORIAL SWIG FUND

Alfred & Anita Cotton *in memory of David Sol Cotton*

GARDEN LANDSCAPING FUND

Ruth Ehrenkrantz & Spencer Klein *in honor of Ken Kirsch*
Neil Gozan, Gale Antokal and Henry & Sam Gozan *in memory of Phoebe Gozan*
Nancy Turak & Marc Davis *in memory of Alex Turak*

GENERAL FUND

Maria Barzoloski
Fa-La-La Restaurant
Monty Garretson
Sandy & Vivian Golden
Edward Holly
Betty Kalis
Mel & Dorothy Lemberger
Paul Nerenberg & Heather Knutson
Adele Amodeo *in memory of Aron M. Rosenzweig*
Adele Amodeo *in memory of Gloria Rosenzweig*
Adele Amodeo *in honor of Isabella Rothenberg being called to the Torah as a Bat Mitzvah*
Joanne Backman & Harry Pollack *in memory of Beatrice Walpert*
Joanne Backman & Harry Pollack *in celebration of Marc Davis receiving the 2010 Gruber Foundation Cosmology Prize*
Michael & Louise Caplan *in honor of Alex Kennedy's high school graduation*
Max & Bonnie Cooperstein *in memory of Clara Cooperstein*
Max & Bonnie Cooperstein *in memory of Lisa Gansky's dog, Choco*
Max & Bonnie Cooperstein *in memory of Zenda Brownfain*
Martin & Jill Dodd *in loving memory of Shira Riff*
Shelly Forster *in memory of Bob Forster*
Tony Hecht *in memory of Zanetta Hecht*
Mark & Estie Hudes *in honor of Harry & Marilyn Margulius' 50th wedding anniversary*
Steven Joseph & Corey Hansen-Joseph *in honor of Stanley & Miriam Schiffman's 50th wedding anniversary*
Amy Block Joy *in memory of Seymour Block*
Gail & David Offen-Brown *in memory of Henry Gross*
Marv Pearlstein *in honor of Zach Shutan being called to the Torah as a Bar Mitzvah*
Marv Pearlstein *in memory of Alfred & Harriet Pearlstein*
Irving Pozmantier *in memory of Ida Heinz Gradolph*
Miriam Rabinovitz *in memory of Shira Riff*
Miriam Rabinovitz *in memory of William Rabinovitz*
Miriam Rabinovitz *in appreciation of Joanne Backman for her contributions as President in 2010-11*
Miriam Rabinovitz *in appreciation of Dan Magid's presidency for 2011-12 and his ongoing contributions to Beth El*
Mayer & Linda Riff *in memory of Delia Sipes*
Gayle Roberts *in honor of Eli Barnes being called to the Torah as a Bar Mitzvah*
Stanley & Miriam Schiffman *in honor of Harry & Marilyn Margulius' 50th wedding anniversary*
Stanley & Miriam Schiffman *in honor of Bob & Sara Kupor's 40th wedding anniversary*
Miriam Selig *in memory of Ida Gradolph*
Aleksandr Shirman *in memory of his wife Bella Shirman*

Jerry Weintraub *in honor of Harry & Marilyn Margulius' 50th wedding anniversary*
 Linda & Sidney Yassinger *in honor of Alex Kennedy's high school graduation*

HOMELESS MEAL PROGRAM

Eli Barnes
 Jerry Weintraub
 Gail & Ralph Bernstein *in memory of their parents*
 Gail & Ralph Bernstein *in honor of Veta Jacquelin*
 Neil Gozan, Gale Antokal, Henry & Sam Gozan and Judith Goldstein *in memory of Neil's father, Henry Gozan*
 Neil Gozan & Gale Antokal *in memory of Henry "Hank" Streitfeld*
 Pauline Hale *in memory of her son Mark*
 Jean Henderson *in memory of Robert & Marilyn Hemmings*
 Estie & Mark Hudes *in memory of Avraham Glick*
 Bob & Sara Kupor *in honor of Stanley & Miriam Schiffman's 50th wedding anniversary*
 Anna Mantell & Bob Goldstein *in honor of the birth of granddaughters, Maya & Zoe to Michael & Andrea Cassidy*
 Harry & Marilyn Margulius *in honor of Stanley & Miriam Schiffman's 50th wedding anniversary*
 Steve & Joan Ominsky *in honor of Ruth Spear*
 Steve & Joan Ominsky *in honor of Adele Amodeo*
 Steve & Joan Ominsky *in honor of Ellie Goldstein-Erickson*
 Scott & Ruth Spear *in memory of Norman Graup*
 Scott & Ruth Spear *in memory of Hsiao-ti Catherine Falcone*
 Phyllis Zisman *in memory of Richard Hoffman*

HUMANITARIAN AID FUND

Barbara Fierer & Bob Brandfon *in memory of Norman Graup*
 Aida & David Nozick *in memory of Norman Graup*

MARIAN MAGID FUND

Jean Henderson *in memory of Robert & Marilyn Hemmings*
 Nancy Turak & Marc Davis *in honor of Dan Magid becoming President of the Congregation*

MITZVAH FUND

Neil Gozan & Gale Antokal *in memory of Edna Freeman*

MUSIC FUND

Gail & Ralph Bernstein *in appreciation of Rabbi Kahn and Rabbi Zellman*
 Bruce & Susan Carter *in honor of Miriam & Stan Schiffman's 50th wedding anniversary*
 Jerry Garfield *in honor of Arthur Swislocki's 60th birthday*
 Thomas & Amy Lurquin *in appreciation of the Torah Chanting Class*
 Andrew Pollack & Deborah Jordan *in appreciation of Rabbi Zellman*

Nancy Turak & Marc Davis *in memory of Shira Riff*
 Nancy Turak & Marc Davis *in honor of Rabbi Zellman for the beautiful LGBT Friday night service*

NURSERY SCHOOL FUND

Alisa Einwohner *in memory of Lillian Stern*
 Rabbi Ferenc & Paula Raj *in memory of Rosalie Wolk*
 Nancy Turak & Marc Davis *in honor of Barbara & Steve Segal on the birth of their granddaughter, Abigail Rose*

ONEG/KIDDISH FUND

Harry & Marilyn Margulius *in appreciation of Rabbi Kahn and their friends at Beth El*
 Leslie Reckler & Cameron Moore *in memory of Stanley Reckler*

RABBI YOEL KAHN'S DISCRETIONARY FUND

David Altschul
 Kimberly Beeson & Rebecca Abravanel
 Thomas & Amy Lurquin
 Susan Amdur *in appreciation of Rabbi Kahn*
 Gail & Ralph Bernstein *in appreciation of Rabbi Kahn and Rabbi Zellman*
 Rich & Amy Greenberg *in honor of Rebecca & Steve Band's wedding*
 Steven Joseph & Corey Hansen-Joseph *in honor of Harry & Marilyn Margulius' 50th wedding anniversary*
 Bonnie Juengert and Leon & Nancy Slotin *in honor Laurie Juengert and Jaime & Anica Falcone-Juengert*
 Jean Henderson *in memory of Robert & Marilyn Hemmings*
 Harry & Marilyn Margulius *in appreciation of Rabbi Kahn and their friends at Beth El*
 Marv Pearlstein *in honor of the 2011 Confirmation Class*
 Lara Peso & Josh Eubank *in appreciation of Rabbi Kahn*
 Irene Peters & Brian Schwartz *in memory of Cindy Bernstein*
 Andrew Pollack & Deborah Jordan *in appreciation of Rabbi Kahn*
 Doreen & Stephen Rothman *in memory of Ada Zinn*
 Debra Schoenberg & Karen Fierer *in memory of Irwin Schoenberg*
 Paul & Susan Sugarman *in appreciation of Rabbi Kahn*
 Arthur Swislocki & Ann Manheimer *in memory of Adam Swislocki*
 Jerry Weintraub *in honor of Isabella Rothenberg being called to the Torah as a Bat Mitzvah*

RABBI EMERITUS' DISCRETIONARY FUND

Jean Henderson *in memory of Robert & Marilyn Hemmings*

(continued on page 16)

From the President (continued from page 2)

The best thing about the miracles that happen here is that they are of the Jewish type – the ones that happen only with our participation. Why is that the best thing? Because just like the Children of Israel who built the Mishkan in the desert, by participating at Beth El, you become part of this wonderful community and you help to make a difference in the world. These amazing programs are only amazing because we have the fabulous staff and committed volunteers that make them happen – and you can be part of that.

When I walk into Beth El, I see friends everywhere. It is an uplifting experience that I would like to share with everyone. So I invite you to try it out. Give me a call and let me know how you would like to plug in to this community. There are so many great opportunities to become part of the miracles at Beth El. Like the Israelites in the desert, together we can make it truly Beth El – the House of G-d.

I look forward to meeting you and working with you.

Dan Magid
President, Board of Directors

Tzedakah (continued from page 15)

RABBI VIDA LIBRARY FUND

Jean Henderson *in memory of Robert & Marilyn Hemmings*
Scott & Ruth Spear *in honor of Harry & Marilyn Margulius’*
50th wedding anniversary
Nancy Turak & Marc Davis *in honor of Ruth Guthartz’s*
90th birthday

SOCIAL ACTION FUND

Carol Brownstein *in memory of Evelyn Brownstein Alexander*
Nancy Turak & Marc Davis *wishing a R’fuach Sh’lama to Peggy*
Lipson, Mary Jacobs, Lynne Fingerman and Bonnie Cooperstein

TORAH STUDY

Gail & David Offen-Brown *in honor of Harry & Marilyn*
Margulius’ 50th wedding anniversary

YOUTH & FAMILY EDUCATION FUND

Sharon Goldfarb & Brad Glasser
Susan Goldstein & Andy Kivel
Alisa & Calvin Morrill
Bruce & Margaret Winkleman

YOUTH GROUPS

Janet & Mort Ehrlich *in honor of Alex Kennedy’s high school*
graduation

LISTENING COMMITTEE

The Listening Committee (“Shema Beth El”) is comprised of people who are curious about other people and enjoy getting to know them. We are here better to determine the aspirations, wishes, needs, concerns of Beth El members. We are here to listen to peoples’ stories; to create meaningful relationships. We can gather information one-at-a-time from congregants, or in groups, possible depending on what we as individuals are comfortable with. We can hopefully join members together who share issues and interests. Should those issues be on the level of being addressed by Beth El and its infrastructure (e.g. a mechanism for supporting our ill members), that is valuable information which may be addressed and which might make Beth El a greater part of its congregants’ community.

Should those needs involve matters beyond Beth El’s (e.g. mental health) then Beth El’s groups might join with comparable groups in other Berkeley congregations as part of BOCA (Berkeley Organized Congregations for Action) and its national entity PICO (People Improving Communities through Organizing) to do research about how we might affect social policy to enhance social justice. We will also become a part of a national Reform Judaism movement encouraging community organizing called Just Congregations.

We will undertake our listening campaign in the Fall. We have all been greatly gratified by the “listening” we have done, one-to-one, to this point. We welcome Beth El members who would also enjoy participating with us in creating stronger community.

Our next meeting is on **Thursday, August 25 at 7:00 pm** at Beth El. We typically meet on the third Thursday of the month, depending on our schedules.

If you have interest in the process or have questions about it, please contact Maxim Schrogin at maximds@aol.com or 510-528-4367.



THE NEW YEAR!

Diane Bernbaum - Director

It's about this time every year that I start getting goose bumps thinking about the amazing classes our Midrasha teachers have created for the year to come. It seems that every year teachers get more and more innovative and they always seem to have their finger on the pulse of our teens. Here are some highlights:

Anna Martin will take her expertise from a summer in Morocco as a Fulbright scholar to teach one class on Jews in the Arab world and another on "Not Just Bagel Eaters," Jews from non-Ashkenazi countries. Both classes will cook a lot. Yum. Day Schildkret will take the popular t.v. show, Project Runway, and have his students create fashions inspired by the Bible and Jewish history. Students interested in yoga can either spend an hour with Lara Walket who will tie yoga poses into each week's Torah parsha (There's really a website that does this!) or with Sacha Kopin who will use yoga to understand Jewish views about the body. Our new art teacher, Erica Fink, has three great courses planned. One will explore various printmaking techniques using the Tanach as an inspiration. Another will learn about iconic Jewish figures through rendering representational and abstract portraits in acrylic paint, paper, collage and found objects. And yet another art class will muse on Jewish notions of time through meditative drawing and painting. Noemi Hollander will look at Harry Potter and wizardry through Jewish eyes and in another class she will examine Jewish values in pop music. (Do you were the values of Hillel are embedded in the music of Sly and the Family Stone?) Sacha and Ilan Persing will look at various aspects of Israeli culture and history. Erica Crowell Altobelli offers a survey of various aspects of the Holocaust. Beth Midanik-Blum looks at relationships in one

class and the American Jewish experience in another. Ilan Persing and Lara Walket are both teaching conversational Hebrew classes and Muni Schweig is teaching Talmud. Sacha Kopin has an 8th grade core class in Ethics and Noemi Hollander and Anna Martin teach the 9th grade core in Jewish identity. And as always, we will have our wonderful Abraham's Vision class which brings Jewish and Muslim students together to explore their own and each other's religion, history and culture. And don't forget Midrasha's hidden gem, our Monday afternoon Tanach study group with David Henkin where each year the class intensely follows a theme throughout various books in the Bible. To find out this year's theme you have to show up for the first class.

There are a few brand new programs. Day Schildkret is spearheading our partnership with Urban Adamah, the new Jewish farm in Berkeley. Students will study weekly classes about food justice and Biblical land use and then spend a couple Sunday afternoons at the Urban Adamah farm. Thanks to a Jewish federation Special Education Micro-Grant to Congregation Beth El, we will be offering She'arim: Gateway to Midrasha, a class for students to discuss the most important questions about the meaning of life from a Jewish perspective. Lara Walket will also be teaching a class on Havdalah, Shabbat and leadership skills, training students to work with our partner synagogues on presenting family havdalah celebrations.

Midrasha begins on Sunday, September 11 at 9:30 am. Our midweek class with David Henkin begins the following day, Monday, September 12 at 4:15 pm. There will be an orientation for new students and their parents on Tuesday, August 30 at 7:30 p.m. For any questions phone the Midrasha office at 510-843-4667.

Introducing our new JVS Kohn Intern, Emma Snyder!

Congregation Beth El welcomes Emma Snyder to our staff this summer! Emma is spending eight weeks as an intern, splitting her time working with Beth El and Berkeley Midrasha. Emma grew up here in Berkeley, attended Berkeley High, and recently completed her first year at Whitman College in Walla Walla, Washington. Emma is planning on studying sociology and rhetoric and film studies, and is interested to see how her studies apply to a work setting.

Emma is excited to be involved in the non-profit world, especially in the Jewish community. By serving as a Jewish Vocational Service (JVS) intern, she is enjoying reconnecting to the Jewish community and furthering her Jewish education. Each week, Emma is at Beth El Monday through Thursdays, and on Friday she attends an educational seminar at JVS. The Kohn internship involves 30 other interns from around the bay area, and Emma is especially enjoying organizing the group for social events, such as the SF AIDS Walk.



Emma is finding the Beth El community to be warm and filled with energy. She has been instrumental in completing many projects this summer, including writing content for the Beth El website, creating a b'nei

mitzvah community volunteer guide and working on the annual shabbaton. We are very grateful to JVS for the opportunity to have an intern, and pleased to have Emma with us this summer!

If you are interested in learning more about the JVS Kohn internship, please visit: <http://www.jvs.org/kohn>.

It is a Jewish tradition to give *Tzedakah* to commemorate life cycle events and other occasions. Are you celebrating a birthday, engagement, anniversary, baby naming, Bat/Bar Mitzvah or a recovery from illness? These are just a few ideas of appropriate times to commemorate with a donation to Beth El. These tax-deductible donations are greatly appreciated and are a vital financial supplement to support the wonderful variety of programs and activities that we offer at Congregation Beth El. Thank you for your support.

CONGREGATION BETH EL Fund Contributions

This contribution of \$ _____ is in Memory of* in Honor of*

*

Please credit the fund checked below:

Contribution

Acknowledge

From:

To:

Address

Address

- | | |
|---|---|
| <input type="checkbox"/> General Fund - Use Where Most Needed | <input type="checkbox"/> Marian Magid Memorial Fund |
| <input type="checkbox"/> Aaron Plishner Children Library | <input type="checkbox"/> Men's Club |
| <input type="checkbox"/> Arjmand Adult Education Fund | <input type="checkbox"/> Mitzvah Committee |
| <input type="checkbox"/> Blachman Emergency Fund | <input type="checkbox"/> Music Fund |
| <input type="checkbox"/> Building Fund | <input type="checkbox"/> Nursery School Fund |
| <input type="checkbox"/> Camp Kee Tov Scholarship Fund | <input type="checkbox"/> Oneg/Kiddush Fund |
| <input type="checkbox"/> Chevra Kadisha Fund | <input type="checkbox"/> Prayerbook Fund |
| <input type="checkbox"/> David Cotton Memorial Swig Fund | <input type="checkbox"/> Rabbi's Kahn's Discretionary Fund |
| <input type="checkbox"/> Ellen Meyer Childcare Fund | <input type="checkbox"/> Rabbi Emeritus' Raj's Discretionary Fund |
| <input type="checkbox"/> Endowment Fund | <input type="checkbox"/> Rabbi Vida Library Fund |
| <input type="checkbox"/> Freed Flower Fund | <input type="checkbox"/> Religious School Fund |
| <input type="checkbox"/> Homeless Meal Program | <input type="checkbox"/> Social Action Fund |
| <input type="checkbox"/> Israel Scholarship Fund | <input type="checkbox"/> Youth Groups Fund |
| <input type="checkbox"/> Bar Lev Landscape Fund | <input type="checkbox"/> _____ |

Thank you for your generosity. Please make checks payable to Congregation Beth El and mail to 1301 Oxford Street, Berkeley, CA 94709

TORAH STUDY

Meets Shabbat Morning (Saturday)
in the Beit Midrash at 9:15am

August 6, 2011 - Parashat Devarim

Lamentation

Led by Rabbi Zellman & Arella Bar Lev

August 13, 2011 - Parashat Vaetchanan

Deuteronomy 3:23-7:11

Led by Mark Aaronson

August 20, 2011 - Parashat Eikev

Deuteronomy 7:12-11:25

Led by David Kesler

August 27, 2011 - Parashat Re'eh

Deuteronomy 11:26-16:17

Led by Dan Magid

September 3, 2011 - Parashat Shoftim

Deuteronomy 16:18-21:9

Led by Bob Goldstein

September 10, 2011 - Parashat Ki Teitzei

Deuteronomy 21:10-25:19

Led by Robinn Magid

September 17, 2011 - Parashat Ki Tavo

Deuteronomy 26:1-29:8

Led by Rabbi Bridget Wynne

September 24, 2011 - Parashat Nitzavim-Vayeilech

Deuteronomy 29:9-31:30

Led by Diane Bernbaum

October 1, 2011 - Parashat Ha'Azinu

Deuteronomy 32:1-32:52

Led by Cathy Stevens

October 8, 2011 - Yom Kippur

October 15, 2011 - Sukkot

Ecclesiastics

Led by Rabbi Kahn

October 22, 2011 - Parashat Bereshit

Genesis 1:1-6:8

Led by Jenn Rader

October 29, 2011 - Parashat Noach

Genesis 6:9-11:32

Led by Stu Berman

Virginia Woolf. Isaac Newton. Rabbi Hillel.



Whether expressing themselves through arts, athletics, academic achievement or community service, JCHS students are inspired to challenge themselves, discover their values, and imagine their futures. Our rich curriculum braids together Humanities, Jewish Studies, and Math/Science, preparing our graduates to attend top universities across the country and to apply the lessons they learn here to their lives beyond our walls.



OPEN HOUSE

October 30 & December 4

2:00-4:00 p.m.

Please RSVP

www.jchsofthebay.org/openhouse

415.345.9777 x124



COMMUNITY TALMUD CIRCLE

Dates: Sundays, Oct 30, Nov 13, Dec 4, Jan 15, Feb 5, Feb 26, Mar 18, Apr 22, May 13 / Time: 9:30 – 11:30 am

Lehrhaus Judaica, the Aleph Society, and Kevah, in partnership with the East Bay JCC, and Congregations Beth El, Beth Israel, and Netivot Shalom, are seeking curious, committed and community-minded adults to become the first EastBay cohort of Aleph Fellows for the 2011-12 academic year. Aleph Fellows meet one Sunday morning a month for nine months, to engage in chevruta study (partner study) and discussion, participate in webinars, and attend an exclusive event in the spring of 2012 with Rabbi Adin Steinsaltz, one of today's greatest Talmud scholars. **To apply, please visit www.lehrhaus.org.**

Cost: \$135 / Location: Lehrhaus Judaica, 2736 Bancroft Way, Berkeley / Faculty: Professor Deena Aranoff

Looking for the Calendar?

The August calendar was included in our NEW monthly Buzz mailer. For August, September and October calendars, please visit www.bethelberkeley.org for up to date information!

CONGREGATION BETH EL

1301 Oxford Street
Berkeley, CA 94709-1424

Rejuvenate for the New Year!

Congregation Beth El Shabbat Retreat

**at URJ Camp Newman
Friday, September 16-18, 2011**

You are invited to Beth El's fourth annual retreat. This is an opportunity for all members of our community to gather for a weekend of Shabbat celebration, learning, community and relaxation. The weekend schedule offers separate activities for adults and kids as well as activities for families. People of all ages will enjoy organized activities, find their own adventures or kick back and relax, getting to spend time with other Beth El folks.

URJ Camp Newman is a beautiful camp setting, one hour and 30 minutes north of Berkeley in Santa Rosa. Camp Newman is the Jewish summer camp for the Reform Movement for California, and offers an incredible space for groups to gather for sports, arts, prayer and recreation.

The Weekend Package is All Inclusive:

- 2 Nights Lodging • 6 Healthy Kosher-Style Meals • Innovative Outdoor Services • Singing with Isaac Zones
- Art-Nature Programs • Kids & Teens Program (ages 5 and up) • Workshops • Team Trivia Contest
- Folk Dancing • Study and Prayer Opportunities with Rabbi Yoel Kahn and Rabbi Reuben Zellman
- Childcare for all kids (including 0-4 years) • Friday night & Saturday morning services and Havdallah
- Hiking • Swimming • Ropes Course • Plus much, much, more!

Low prices for members! \$125 adult / \$50 child includes meals and lodging in semi-private cabins (shared bath)

*Private cabins available: \$250 adult / \$100 youth

Register by August 26 for the low, subsidized price! (prices will go up to \$175 adult / \$125 child)

Visit www.bethelberkeley.org to register!

