



CBE IN 2020

Vision Statement -- Congregation Beth El in 2020
Taken from the 2010 Strategic Plan

"In the year 2020, Congregation Beth El will be known as a vibrant, financially secure home built upon a unique collaboration between clergy, staff and congregants who have created an engaged and caring community recognized for its spiritual, educational and leadership development programs and inspired by the innovative adaptation of social networking technology."

The following is a conversation that might be overheard in the courtyard of Beth El ten years into the implementation of our Strategic Plan:

One Friday morning, between Purim and Pesach, 2020

Leah: "Hi, Rachael! What are you up to?"

Rachael: "Oh, hi Leah! I'm on my way to Monterey Market to buy some more asparagus. We had them last night for dinner and they are absolutely delicious right now! They're coming from one of the micro-farms in West Oakland. Want to come with me?"

Leah: "Sure! I've got to be back here at one o'clock to pick up the kids from Nursery School, so the timing is perfect. Do you have time to grab some coffee in the café?"

Rachael: "That would be great! Let's take my car – I need to stop at the bio-diesel station. I'm driving the hybrid electric diesel today."

This conversation was heard recently at the beautifully landscaped, well-utilized amphitheater entrance to Congregation Beth El, Berkeley's vibrant center for Jewish learning and spirituality and a leading institution fostering Jewish communal life in the Bay Area. Leah and Rachael plan to stop at the new Kol B'Seder Cafe, a lively spot on the ground floor of the facility that is frequented by many Beth El Nursery and Religious School parents when picking up or dropping off. In fact, the KBS Café is a magnet for students of all ages who attend the vast array of lifelong learning programs offered continuously throughout the year at the Beth El site. In addition to professional and lay-led study groups, many classes and workshops are offered by the Beth El Leadership Circle Scholar-in-Residence program, Lehrhaus Judaica, UC Berkeley, Osher Lifelong Learning Institute, and many other Bay Area community organizations.

For more than fifteen years, since Beth El moved to this location between Oxford and Spruce by Berryman Path, this congregation of 500 member families has been offering multi-generational programs for the entire East Bay community, including a lay-led Torah study group that is the envy of every liberal congregation in the country. Each year, through a generous grant from a well-known local family foundation, a very lucky group of 20 congregants has the privilege of traveling to Israel and learning with Rabbi Yoel Kahn, Beth El's spiritual leader since 2007. As a house of worship, Beth El invites the entire community on Shabbat and year-round to "come in and join us as we raise our voices

in song and prayer together" in their warm and welcoming sanctuary, under the scintillating musical leadership of Rabbi Reuben Zelman.

... Back in the KBS Café, Leah and Rachael are catching up.

Let's listen:

Rachael: "So, what are you doing for Shabbat dinner? Would you and Sam and the kids like to join us tonight?"

Leah: "Yes, we would love to! I'll bring a kugel and the challah. Do you need dessert?"

Rachael: "Nope. We have cookies in the freezer left over from the Purim festival and I'm sure there are plenty. By the way, did you sign up to serve at the homeless meal this Sunday? Ever since this became a weekly event, our kids will not let us miss it."

Leah: "Thanks for reminding me. There is usually a waiting list to volunteer. I think Beth El has been offering the homeless meal since the 1980's. It's really become a vital activity in Berkeley, and I'm proud that our congregation has led the effort to support our local community in this way."

Rachael: "And I'm proud that our kids can look back at four generations of Beth El membership in their families, rich in the knowledge that they have a strong foundation to foster and nourish their Jewish education and sense of social justice."

Leah: "Me too. Now let's get to the market. I don't want to miss those asparagus. I hope the micro-farm is still harvesting them at Passover so I can serve them at the Seder."

The strategic plan for Congregation Beth El is a compass that will guide us along the road to making our vision a reality. Please see Katherine Haynes Sanstad's article on the strategic plan on page 7 for more information.

For the Board of Directors and Program Council I want to add our thanks to all of the members of the strategic planning committee for their dedicated work on this plan. I want to especially acknowledge the extraordinary commitment and efforts by Katherine Haynes-Sanstad and Mike Austin to shepherd the planning process through all of the challenges of completing this comprehensive plan, and preparing us for the next essential stage – the implementation of the plan.

Joanne Backman
President

Project Reconnections (continued from front page)

This is not a concern for our congregation alone - it is an issue for the entire community. The Jewish Community Relations Council has launched a community-wide program, the Year of Civil Discourse Initiative, to address this concern.

"The Year of Civil Discourse (YCD) Initiative is designed to elevate the level of discourse in the Jewish community when discussing Israel. We envision an inclusive Jewish community where people from across the political spectrum can come together, discuss challenging topics, inspire and empower one another, leading to a stronger and more vital Jewish community. YCD will provide Jewish community members, institutions, and leaders with the tools to have respectful, vibrant, engaging conversations about Israel and emerging controversial issues."

We are excited to be participating in the community-wide Initiative and will be hosting diverse programs in the months ahead here at Beth El. We invite you to join us at two programs in February which will initiate our congregational participation in this important project for the Jewish community. Please see page 13 for more information.

Beth El has also been awarded a grant from the Jewish Community Relations Council and the Jewish Community Federation of San Francisco, to organize a cohort of members who are willing to sit down together and to engage in a year-long, intensive dialogue and deliberation, with the goal of learning how to participate in and facilitate civil conversations and meaningful

communication around Israel. A key goal of this program is to reach across the divide between Jews who feel that they are outside the conversation, whether on the "left" or on the "right." This program is modeled after the successful multi-year program initiated at Kehilla Community Synagogue. The program at Kehillah, created in partnership with the JCRC, is the model for our Project Reconnections cohort at Beth El; you can read about the background and nature of the program in this cover story from *The Jerusalem Report*. (<http://www.jcrc.org/downloads/ycd/LearningHowToArgueStory.pdf>)

The Beth El Project Reconnections cohort will be a group of individuals who commit to studying and talking together on a regular basis for an extended period. More information about the specifics of the cohort and how to sign-up will be available at the Kick-off Event on February 6th. (See page 13 for more information.) We will keep the entire congregation informed of our progress and our work. Executive Director Norm Frankel, a 23 year resident of Israel, is coordinating our participation in the Year of Civil Discourse and Project Reconnections, along with Israel Committee Chair Miriam Rabinowitz.

Rabbi Reuben Zellman, Executive Director Norm Frankel, Director of Education Debra Sagan Massey are committed, as I am, to nurturing congregational dialogue and supporting a synagogue community where everyone feels safe, heard and respected.

Rabbi Yoel Kahn

Rabbi Yoel Kahn

Rabbi Professor Marc Saperstein



Marc Saperstein is the principal (President) of the Leo Baeck College, London, England. Previously he held prestigious positions at George Washington University in Washington D.C. Washington University in St. Louis and at Harvard Divinity School (1977-1986). Author of five books and more than 50 articles on various aspects of Jewish history, literature and thought, he is widely recognized as the pre-eminent authority on the history of Jewish preaching. Before leaving the United States, he was Vice President of the American Academy for Jewish Research.

World Union for Progressive Judaism Annual Conference San Francisco

**Beth El is Hosting a Special Shabbat
February 11, 2011 • 8:00 pm**

Please volunteer to host overseas visitors for a special shabbat dinner in your home and then join them in celebrating shabbat at Beth El when Rabbi David Saperstein will be the special guest and the library will be dedicated in honor of Rabbi Ferenc & Paula Raj.

If you would like to open your home to a guest, please contact Caroline Lehman at:
clehman@teacher.com or call 510-528-3220



TO TILL AND TO TEND

In the midst of winter, the Jewish calendar marks the 'birthday of the trees'. On the 15th of the month of Shevat, we celebrate Tu B'Shevat. We eat the fruits and nuts that trees provide, we learn about our responsibility to nature, and we get our hands dirty by planting trees. While mid-January may not be the ideal time for us to be planting, it certainly is an opportunity for us to begin planning our new garden space.

Over the past few years, we have been dreaming of creating a garden space in the area near Spruce Street. These dreams are now turning into plans, and we would love your green thumbs! We are hoping that the garden will provide our members of all ages with the opportunity to connect Jewish values to the earth, and get our hands dirty at the same time. Preschool students, Kee Tov campers, and YAFE participants will all be able to be involved with the garden and enjoy the fruit of their labors. In addition, we hope to have baskets where we can put our 'gleanings' so that our neighbors can also enjoy the food from our garden.

Another way to connect to the land and to enjoy the bounty that it provides, is by getting produce from a Community Sponsored Agriculture (CSA) box on a regular basis. Many organizations are the 'drop off' spots for these fresh bundles of produce, and we are hoping to include Beth El as one of those addresses! If you are interested in helping to organize a regular CSA at Beth El, please let me know by emailing me at: debra@bethelberkeley.org.

Our Tu B'Shevat Celebrations this year will be woven into our curriculum. On Thursday, January 20th we will be having a Tu B'Shevat Family program that begins at 5:30 and runs till 6:30, including snacks. We will be exploring Judaism's strong connection to the earth, and our responsibility to till and to tend it. Please mark your calendars and join us for a family celebration of Tu B'Shevat!

L'shalom,
Debra Massey
Director of Education

YAFE Calendar

January 2011

- 1/8 Chug Mishpacha Resumes
- 1/8 Shabba-Tot Morning Services, 11:00 am
- 1/11 Kadima Midweek Resumes
- 1/11 Education Coffee Talk, 5:30 - 6:15 pm
- 1/14 Shabbat Unplugged! 6:15 pm dinner, 7:00 pm service
- 1/15 **MLK Weekend- NO CHUG MISHPACHA**
- 1/19 Tu B'shvat Seder at the JCC
- 1/20 Tu B'shvat Family Program, 5:30 - 6:30 pm
- 1/23 B'nei Mitzvah Service Learning Project #4
- 1/25 6th Grade Family Program
- 1/27 All School Service, parents encouraged, 5:40 pm

February 2011

- 2/3 5th Grade Meeting for B'nei Mitzvah Date Selection, 6:00
- 2/5 Shabba-Tot Morning Services, 11:00 am
- 2/11 7th Grade Shabbat Dinner
- 2/15 Education Committee Meeting (open to all) 8:00 pm
- 2/19 - 2/24 **PRESIDENT'S WEEK - NO SCHOOL**
- 2/24 All School Service, parents encouraged, 5:40 pm
- 2/26 6th Grade Shabbat Service and Lunch

Tu B'Shevat Adult Seder

Wednesday, January 19 • 7:00 - 9:00 pm at the JCC East Bay

\$20 (Beth El members rate); \$25 general • Buy tickets at brownpapertickets.com!
Includes a local, organic, vegetarian dinner. 21+ and older event.

The Jewish mystics loved this holiday, the day in midwinter when the sap begins to rise in the trees. On this day the bodily spherot (basically, the Jewish chakras) would open, allowing Divine light to energize and renew our connection to our bodies and the earth. How exactly did this happen? It was all about a mysterious combination of fruit, wine and chocolate. OK, they didn't have chocolate. But we will. Join us for an evening of Tu B'shvat exploration as we bring ancient rituals to life through story, song, blessing and great local food.

Co-sponsored by: Congregation Beth El, JCC East Bay, Urban Adamah, Wilderness Torah, Center for Jewish Studies at the GTU and EcoJews of the Bay





LOOKING FORWARD

We spent most of December preparing for and celebrating Chanukah. We enjoyed our special all school Chanukah Shabbat with Rabbi Reuben (aka the latke), Deb Massey, the teachers and the children with their families. December ended with a session of our Vacation Child Care program. We offered child care the first week of winter

break to meet the needs of our families. Vacation Child Care will continue to be offered during winter and spring breaks when there is sufficient enrollment. I believe quality and consistency are very important in the care and education of young children.

We return from winter to break for another busy month. In January the children celebrate Tu B'Shevat, the birthday of the trees. This is another holiday that is easily incorporated into and expanded upon in a nursery school curriculum. It is a perfect time to continue and emphasize our garden project. We plant, maintain, and harvest our own Nursery School container garden throughout the year. The children will also decorate the trees in the yard with birthday crowns, sing songs about trees and planting, and eat lots of snacks that grow on trees. We also learn about the many ways trees are so important to our environment.

The last Friday in January is reserved for Parent Teacher Conferences. School will not be in regular session that day, but childcare will be provided for children only during their specific conference time. Our teachers will also take a break that day to enjoy a special lunch prepared by the Alef Class families.

Looking forward to our next school year, we invite all interested parents to our Nursery School Information Evening on Wednesday, January 12 at 7:30pm in the Beit Midrash/Chapel. This will be an opportunity to find out more about the Nursery School. All families who have applied for the 2011-12 school year will receive an invitation in the mail. If you plan to attend, please call the nursery school office at 848-9428 ext. 219. We will schedule visits to observe the classrooms during the end of January and into February.

The Nursery School families, faculty and clergy will all get together for our annual Nursery School Shabbat Potluck Dinner and Service on Friday, February 4. We bring food to share for our Shabbat dinner at 5:30, and we invite everyone to join us at the special Shabbat service at 6:15. Each of our Nursery School classes will perform a favorite Shabbat song as part of the service.

Barbara Kanter
Director



Save the Date:
Purim Gala
March 19, 2011
Details coming soon!



WINTER WONDERLAND

It's cold outside, we're in the midst of the holiday season and we're entering crunch time in football; these are not things often associated with summer and Camp Kee Tov.

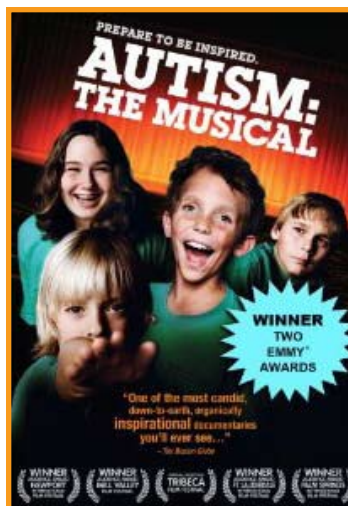
Yet, while we're in the heart of Winter, Camp Kee Tov is once again in the forefront of people's minds!

We had our amazing Reunion Shabbat in mid-December that got that Kee Tov ruach going as we say goodbye to 2010 and hello to Summer 2011! With campers and counselors reuniting with huge smiles, big hugs and joyous singing (with our very own Eric Schoen), we got our first taste of what is sure to be another truly amazing Kee Tov summer. Keeping that ruach going year-round is ever important to both the Camp Kee Tov and Beth El community.

December is a fun month in Kee Tov land. We opened up registration a few weeks ago and have applications pouring in! To register, visit our website www.campkeetov.org! We have also begun the hiring process with many longtime staffers, camper favorites and a fresh crop of CITs itching to be back at camp and to show the campers their best summer ever!

The winter can be a long season. The weather is lousy, school is in full mode and baseball is still a few months away. But with things heating up on the Kee Tov hot stove (see: I'm still in baseball mode!), summer seems closer and closer!

Zach Landres-Schnur
Director



Autism: the Musical

Wednesday, February 16 •
6:30 pm at Beth El

The Jewish community will be recognizing "Disability Awareness Month" by hosting events in the East Bay during the month of February. Congregation Beth El and the Jewish Federation of the Greater

East Bay present a free movie showing of "Autism: The Musical". This movie counters today's bleak statistics with one woman's optimistic pledge to lead a group of autistic children in defying diagnosed expectations by writing, rehearsing and performing their own full-length musical.



Celebrating Francisco Andrade

On the occasion of Francisco Andrade's anniversary of 25 years of service to the Beth El community, I had the pleasure of visiting with Francisco and his daughter, Maria, in their home and learning something of his remarkable journey from a tiny agricultural village, San Jose de la Parilla, in Durango, Mexico to Berkeley and Temple Beth El. Here are excerpts from his reflections translated from Spanish. Please, if you see Francisco, offer him thanks and appreciation for his care and stewardship of our buildings, grounds and community over the many years of his tenure at Beth El. —Jenn Rader

I started working in the fields when I was six years old. I was one of ten children. Our adobe home had no electricity. We carried water for cooking and bathing in buckets from a well. When I was 18 years old, in 1956, I enrolled in the bracero program with the U.S. government and came to Texas and then Arkansas to pick cotton as a temporary agricultural worker. They called us braceros because we labored in the hot sun with the strength of our arms, our brazos. When I came home I worked with my father in the fields, but I was frustrated to work hard all year on our land and then have to wait to see if all would be lost because it didn't rain enough or the prices were too low. I worked with my father until he gave me his blessing to work in the tin mines. No one who hasn't been there can imagine what it's like to work with dynamite and explosives day after day, year after year deep down inside of the earth. It's dangerous and difficult work; I couldn't see supporting my family this way the rest of my life.

In 1979, I pulled out my pension funds from the miners' union and left my wife and four young children to come to California. I first went to Los Angeles. It was difficult. I was there for three months and couldn't find any work. I got a call from my wife's niece in Berkeley; she set me up with a restaurant job. I worked 6 days a week, 12 hours a day and was paid one time each month. I would earn \$500 a month for almost 300 hours of work. After 7 months, my boss lent me \$1,000 to bring the rest of my family here. My wife sold our household goods to raise more money. My family walked through the desert over the border and then my wife and two of our older children hid under the hood of a big truck next to the engine block to travel north from the border. It was scary for her to think that the children could have been badly burned or worse. When they arrived in Berkeley we all slept on a relative's floor until we could find our own place. In 1986, the Congress passed the Amnesty law—now my whole family are citizens.

Matilda Hollander, a Beth El member, used to come to the restaurant where I worked. She would say, "Francisco, tell me if they ever treat you poorly...tell me if you need anything." My sister worked for her, cleaning her house. I was laid off at the restaurant and my wife and I both worked for almost a year at a restaurant in Concord. Our oldest daughter cared for our three younger children. We would leave the house early in the morning to catch the BART train and come home at 11 o'clock at night. Matilda introduced me to Judy Freeman the Executive Director at that time. I worked one day setting up pews, and then a few hours a week in the garden, working outdoors. Soon I was the regular custodian. When I got to Beth El, everything changed for me. Everyone is good to you here. My whole family got health insurance. Avi Levine was the Rabbi then, he was so sweet and good to me. My wife still cooks latkes for Ernie Alexander's family.

Sometimes when I'm alone, when I'm cleaning in the sanctuary, I'll stop and pray to God. I pray for forgiveness for any wrongs I've committed and give thanks. Faith in God is worth everything.

My wife is my guide. When I get my check I hand it over to her. She knows how to plan, how to save. She always has a vision for the future. I never wanted my children to work the way my wife and I have worked; I wanted them to work at a desk with a computer. All of my children do that kind of work. I had nothing as a boy; I have a home here, my wife, four children, seven grandchildren. My wife and I built a beautiful home in San Jose de la Parilla—we even bought some land to remind us of where we came from, of our childhood. We can go back and visit now. My wife and I, through hard work and sacrifice, have accomplished a lot. Yo soy feliz.

***Francisco's 25 years of service will be honored at Shabbat services on Saturday morning, January 29. Please mark your calendars!*

Celebrating Francisco Andrade's 25 Years of Service to Beth El

Shabbat morning, January 29, 2011 • 10:15 am

Followed by a festive Oneg with food, music and congratulations

Francisco has been a dedicated custodian of Beth El's facilities and community since 1985. At Shabbat Services on January 29, we will honor one of Beth El's longest-term staff members.

Please come out to thank him for his service to our community.



BETH EL GOES TO THE THEATER!

Saturday, January 15, SF Jewish Community Center

LOST IN YONKERS

The Men's Club is sponsoring a trip to the SFJCC to see Neil Simon's *Lost in Yonkers*. This event is of course open to everyone. Members who wish to see the show should purchase their own tickets from the JCC by going to www.jccsf.org or calling 415-292-1200.

We will eat before the show at Osteria, a nearby Italian restaurant that Bob Goldstein describes as wonderful. There's no need to RSVP for the theater event, but if you'd like to attend and plan to join us at Osteria, please call Joe Schlessinger at 510-524-7253 so we can arrange enough table space.

Sunday, January 30, Curran Theater, San Francisco

NEXT TO NORMAL

With the Bay Area Jewish Healing Center

An emotionally intense, yet smart and witty musical that cleverly depicts the "fragmenting effects of mental illness within a family." *Next to Normal* won the 2010 Pulitzer Prize. A part of the Jewish community's efforts to educate the community and support people and families living with awareness mental illness, this show is a benefit for the Jewish Healing Center of the Bay Area. Contact the Bay Area Jewish Healing Center at www.jewishhealingcenter.org or 415-750-3436 for tickets.

Thursday, February 10, Ashby Theater, Berkeley

ANDY WARHOL: GOOD FOR THE JEWS?

Written and performed by Josh Kornbluth
After show chat with Rabbi Yoel Kahn

The Bay Area's favorite intellectual comedian, Kornbluth's latest investigation centers on the pop art icon Andy Warhol, and his one man show on the subject makes for a fiercely entertaining night at the theatre. Rabbi Yoel Kahn joins Josh for an on-stage dialogue after the performance on Thursday, February 10 at 8:00 pm. Tickets are available for \$17 by going to www.shotgunplayers.org or calling the box office at 510-841-6500 ext. 303.

STRENGTHENING OUR COMMUNITY: A STRATEGIC PLAN FOR CONGREGATION BETH EL (2011-2015)

How does a synagogue community of 500 households, two rabbis and 4 senior staff, and numerous teachers and counselors ensure that its mission and vision are expressed through every program – every interaction? It ensures that that mission and vision are in the hearts and minds of the community. It teaches them diligently and speaks of them when programs are designed and when they are implemented and when they are reviewed.

Between February and June of this year, the strategic planning committee gathered information about our community, about other Jewish institutions and about social trends that affect synagogue life. We also listened to what congregants said in surveys and community meetings and spoke with staff clergy and volunteers to clarify our vision, refine our mission and create strategic priorities for the next five years.

The result of the committee's labor is *Strengthening Our Community: A Strategic Plan for Congregation Beth El, 2011-2015*. The purpose of the strategic plan is to make our values and goals explicit and articulate strategies for achieving our goals. It is a strategic framework that allows for discretion in implementation, reflects our values, and is responsive to changes in the environment in which we operate. It should provide a context for making choices of how we spend our resources, what capabilities we develop, and how we adapt to unforeseeable circumstances.

The engine that will drive the pursuit of our mission is the partnership among volunteers, clergy, and staff that has enlivened this community since its inception. So, come February, please look for more information about our plans at www.bethelberkeley.org and to see how you might like to be involved.

We would like to thank the members of the strategic planning committee for their work: Volunteers: Adele Amodeo, Susan Austin, Alex Bergraun, Jeff Brand, Martin Dodd, Lisa Feldman, Ann Gonski, Jennifer Kewar, Peggy Lipson, Emily Marthinsen, Jim Offel, Sara Sarasohn, Debra Scheonberg, and Judy Wolff-Bolton; Board members serving ex-officio: President Joanne Backman and 1st Vice President & President Elect Dan Magid; and Clergy and Staff: Rabbi Yoel Kahn and Executive Director Norm Frankel. We extend special thanks to Mike Austin who contributed many, many hours as our Strategic Planning Consultant.

Katherine Haynes Sanstad
Immediate Past President

HINEINI



It is 2011, and I want to address this article specifically to our 9th-12th graders and say "Hineini." Here I am. Here your congregation is; ready, and willing to support you in creating your group. BEY- Beth El Youth for 9th – 12th graders is currently in need of teen leaders, of you. We are looking for teens that are interested in creating opportunities for your peers to have

fun in a safe, Reform Jewish environment. Youth group is a chance for you to explore yourselves, your Judaism and the world around you through peer-planned and peer-led events. It is a positive, creative experience where the teens are encouraged to dream big, and assisted by an advisor to follow through. The question is what do you want to do? You can have lounge nights at Beth El, go to sports games, Sky High or Six Flags, take trips, run a Mitzvah Corps, start a Beth El Band, it just all depends on what you want to do, and how much you are willing to work together to make it happen.

Parents, I encourage you to bring your teens to events if at all possible. They might not be keen to attend without a push, without a friend, but if they come together, and re-kindle that community they had with their B'nai Mitzvah class, their Geshet Camp Kee Tov experience, then they will be glad they came. When they start to get involved, and find themselves an integral part of their Jewish community with plenty of room to grow, they will be glad.

"Hineini." Here I am. Here is your congregation, ready, waiting, hoping to have you come together in 2011, and make the 9th-12th grade youth group yours. To get involved and help create the next event, please contact me at rebecca@bethelberkeley.org, or 510-848-2122 x214.

L'shalom,
Rebecca DePalma
Youth Group Advisor



Basketball Champions from a recent Youth Group event

YOUTH GROUP CALENDAR

All of Beth El's youth are encouraged to join us for the following events:

Ruach (4th & 5th Graders)

January 22 • 1:00 - 4:00 pm
Ruach Tu B'shvat Challenge

March 12 • 1:00 pm / March 19 • throughout the day
Zipcode Mishloach Manot Making & Distributing

Sababa (6th & 8th Graders)

January 14 - 17
Regional Event - West Coast Party Jr. at
Camp Newman

February 4 • 6:15 - 7:00 pm
Ski Trip Meeting for Parents & Students

February 6 • 6:00 am - 8:00 pm
Ski Trip to Boreal - Sign-up to Ski, Snowboard or SnoTube
by visiting: <http://bethelyouthgroups.wufoo.com/forms/sababa-skisnowboardsnotubing-trip/>

March 25 • 6:00 - 10:00 pm
Sababa Shabbat Dinner & a Movie

BEY (9th & 12th Graders)

January 28 - 30
Regional Event - Midrasha Retreat 8th - 12th graders

February 18 - 22
International Event - NFTY Convention in Dallas
for 9th - 12th graders

March 11 - 13
Regional Event- NFTY-CWR Mitzvah Torah Corps 9th-
12th graders

March 18 - 20
Regional Event- Midrasha Retreat 8th-12th graders

B'NAI MITZVAH



The congregation is cordially invited to attend as our daughter, **Rudy Brandt** is called to the Torah as a Bat Mitzvah on Saturday, January 15, 2011, at 10:15am. Kiddush will follow.
Rabbi Jim & Lauren Brandt



The congregation is cordially invited to attend as our daughter, **Samantah Resnik** is called to the Torah as a Bat Mitzvah on Saturday, February 12, 2011, at 10:15am. Kiddush will follow.
Alan & Sheryl Resnik



The congregation is cordially invited to attend as our son, **Kobi Appel-Bernstein** is called to the Torah as a Bat Mitzvah on Saturday, February 19, 2011, at 10:15am. Kiddush will follow.
Judy Appel & Alison Bernstein

WELCOME TO OUR NEW MEMBERS:

Elena Aguilar

Bronwyn Eisenberg

Rebecca Greenberg & Steve Band

Offer & Mirit Grembek

Michal Grunfelder & David McCloy

Noemi Hollander & John Wagner

Sheri Krams & Olivia Martinez

Yaron & Yaara Litwin

Jason & Laura Turbow

THE COMMUNITY IS INVITED...

During services on January 29th,
the Zissman-Sontag-Murphy family would like to
invite you to the baby naming of

MAGGIE ROSE ZISSMAN,

born October 25, 2010.

She will be named after her maternal grandmother,
Maggie Sontag and great-grandmother, **Rose Oster.**



NEW BOOKS IN THE LIBRARY

Donations to the Plishner and Vida Funds make it possible for the library to have new books, both for children and adults. Here are some new adult books:

Those who have not the time to read the 20 or so volumes of Salo Baron's history of the Jewish people but who wish not to be wholly ignorant of our history will welcome *A Short History of the Jews*, by Michael Brenner, professor of Jewish history and culture at University of Munich, which relates this history from Abraham to the 21st century. The book is called sweeping, riveting, lively and engaging. (Salo Baron's vast work is also in the library to be checked out or consulted.)

Another entry into our history is provided by *The Cambridge Guide to Jewish History, Religion, and Culture*, ed. by Judith Baskin and Kenneth Seeskin. Its 21 chapters by distinguished scholars cover everything promised in the title.

The introduction to that book, and the chapters on "Jewish Philosophy" and "Modern Jewish Thought" all refer to Emmanuel Levinas, the greatest ethical thinker of the 20th century. An introduction to and explication of his thought is found in *A Covenant of Creatures: Levinas' Philosophy of Judaism*, by Michael Fagenblat. A number of introductions to Levinas' thought have been published. Many of them are watered-down or plain wrong. This one is neither.

Maimonides' Confrontation with Mysticism, by Menachem Kellner, was a finalist for the National Jewish Book Award. Professor Kellner has published several books on Maimonides and also on Abravanel and Gersonides. This book, with a foreword by Moshe Idel, the foremost living authority on Kabbalah, shows how and why Maimonides rejected the "proto-Kabbalistic" Judaism that preceded him, and how his writings provoked the ensuing Kabbalistic counter-reformation. "Maimonides presented in this book will seem to many readers to be so far out of the mainstream of Judaism as to have left it altogether." Or "it shows that the profound structures of this religion are flexible enough to allow the emergence and success of astonishing reforms."

In *Creation and the Persistence of Evil: the Jewish Drama of Divine Omnipotence*, Jon Levenson, List Professor of Jewish Studies at Harvard, reconsiders the creation account of Genesis in light of the question: if Creation is good (as it is), why does evil persist? As Jeremiah asks, "Why does the way of the wicked prosper?" The answer of the Bible to that question is not an intellectual one; it is: "Do justice! Renew creation!" "This is more like liturgy than philosophy."

Anita Diamant's new novel, *Dark After Night*, tells the story of four quite different Jewish women, all Shoah survivors, after they are freed from a British prison for "illegals" near Haifa, to begin new lives in Israel, in 1945.

Sir Martin Gilbert adds to his many history books of Jewry in *Ishmael's House: A History of Jews in Muslim Lands*. This history proceeds from the refusal of the Jews of Medina to accept Mohammed as a prophet up to the political sensitivities of the current Middle East. For the larger part of that 1400 years, most Jews lived in Islam, and thus the histories of Judaism and Islam are intertwined.

A Beth El congregant was in a bookstore in Krakow and brought back from there Poland and the Jews: *Reflections of a Polish Jew*, by Stanislaw Krajewski, a key figure in the revival of Jewish life in Poland over the past three decades. The book, published in Krakow (in English), is a collection of essays on many aspects of the post-World War II revival of Judaism in Communist Poland and later—essays which were part of this revival. Jewish Communists of Poland are indeed a category of Jewish history, and modern Poland is not by any means only a Jewish cemetery.

Scott Spear
Library Chair

WELCOME TO THE PANTRY CHUG!

Do you like to cook? Schmooze? Do both while filling Beth El's freezer with delicious food!

The Pantry Chug gets together to cook delectable treats for Beth El events. For example, we made most of the food for the Yom Kippur break-the-fast, the new member and prospective member brunches and the Multifaith Thanksgiving program.

So far, we've been meeting once a month at Beth El and our homes. Starting in January, we're going to be adding a cooking session at Beth El on Thursday afternoons, during Kadima, so parents of school age kids can participate as well.

Our next cooking sessions will be:

Thursday, January 20 • 4:00 - 6:00 pm
(at Beth El)

Sunday, January 23 • 9:30 am - Noon
(at a private home)

You don't have to come regularly, just come when you can! For more information and to get on the Pantry Chug email list, contact Debbie Leon at ruach@bethelberkeley.org. Hope you can join us!



FROM THE GIFT SHOP

We did not know what to expect when we planned the Chanukah Bazaar since the date coincided with the Thanksgiving holiday. We were pleasantly surprised! In spite of the fact that we did not have the usual crowds, our sales beat last year's and customers were spending on bigger ticket items. We're ready to declare the recession over!

Our sales continued to soar during the following two weeks and we are happy to see our showcases with a few empty spaces, and are proud to report that we appear to have had a "typical" holiday season even though "November came early this year" and interfered with Chanukah. None of this would have been possible without the help of our wonderful volunteers who deserve a big "Thank you!"

Our professional latke makers under the charge of Marc Davis were: Joel Blumenfeld, Ron Blachman, Arthur Swislocki, Elliot Slamovich, and Paul and Jacob Antoniadis. Laurie Juengert volunteered to do the shopping for ingredients. Thank you all!

To help with the Saturday set up, we had some shleppers and some display arrangers. To shlep, we had Wendy and Brian Lukas, Barbara Segal, Ron Blachman, Michele Horaney, and Susan and Jacob Amme, all under the watchful eye of Odette Blachman. Setting up the artistic displays under Robinn Magid's direction, were Emily Marthinsen, Judy Vared, Nasrine Greene, Miriam Schiffman, Alisa Einwohner and Brian Lukas. Thanks for your professional help and artful eye!

Sunday shopkeepers included: Barbara Schmidt, Emily Marthinsen, Shelley Halperin, Max and Bonnie Cooperstein, Sara Kupor, Nasrine Greene, Miriam Schiffman and Merle Fajans. Our busy cashiers were: Bob Goldstein, Anna Mantel, Barbara Blachman, Stan Schiffman, and Betty Seaton.

Our kitchen crew headed by the fabulous Evie Groch did a fine job of preparing and serving the lunch. They were: Barbara Segal, Adele Amodeo, Jim Offel, Renie Cheney Cohen, and Alison Lukas. Jerry Weintraub graciously took his usual place as cashier.

Our cookie bakers (yum!) contributed delicious goodies: Katherine Sanstad, Marc Derewetsky, Nancy Turak, Nancy Lewin, and Merle Fajans.

We were ready for more sales on Monday morning thanks to Sunday's "Clean-up crew": Ron Blachman, Claire Ungar, George Lavender, Lisa Feldman, Caroline Lehman and Nancy Turak.

Our customary and gracious "controller" was Andy Ganes, helped by Adam Ganes, who made sure we had change, tabulated receipts and made the bank deposit. Lori Perlstadt created some great new publicity, (did you see the article in the Berkeley Times?), circulated flyers, etc. The Berkeley Times also sent a reporter (named Rio) who collected comments on Sunday and printed them the following week along with pictures. Please thank the Berkeley Times with your patronage!

None of this would have been possible without the support of our professional synagogue staff, including Norm, and our tireless, patient custodians. We are fortunate to have such efficient and helpful people to work with! Thank you to everyone, including YOU, our wonderful and loyal customers! And now we're off to the S.F. Gift Show in January to see what's new. Remember to come see what new things we find for you.

Odette Blachman and Robinn Magid
oblachman@sbcglobal.net





TZEDAKAH

AARON PLISHNER LIBRARY FUND

Michael & Rosalind Plishner

ARJMAND ADULT EDUCATION FUND

Allan & Phyllis Gorelick

Barbara Shulman

H. & H. Steckel

Mary Jacobs in honor of Beverly Eigner

Anna Mantell & Bob Goldstein in honor of the wedding of Joel

Melamed & Stephanie Premji

Ruth & Scott Spear in memory of Naomi Janowitz's mother, Gayle

BUILDING FUND

Richard & Susan Seeley in honor of Albert Magid being called to the

Torah as a Bar Mitzvah

Nancy Turak & Marc Davis in memory of Albert Bordow

Nancy Turak & Marc Davis in memory of Paul & Susan Sugarman's first

grandchild, Amira

CAMP KEE TOV SCHOLARSHIP FUND

Jean Henderson in memory of Robert Hemmings

COMPLETE THE SANCTUARY FUND

Paul Steckel & Mo Morris

GENERAL FUND

Joseph Becker

Monty Garretson

Howard & Alice Gruber

Edward Holly

Juliette Hassid in memory of Sami Hassid

Julie & Patrick Kennedy in honor of Rudy Brandt being called to the

Torah as a Bat Mitzvah

Amy Resner & William Lee in memory of Jonathan Levine

Robert & Elizabeth Sharf in loving memory of Rosslyn Sharf

Phyllis Zisman in appreciation of Rabbi Kahn & Rabbi Zellman

HOMELESS MEAL PROGRAM

Anneliese Armstrong

Stu & Judy Berman

Mark & Tinsley Cohen

Clarke & Maria Daniels

Bob Epstein & Amy Roth

Bill Falik & Diana Cohen

Barry & Erica Goode

Ronna & Don Honigman

Allen & Hannah King

Bob & Sara Kupor

Debbie & Jeff Leon

Milton Mozen

Meredith Murphy

Jaleh Pirnazar

Phyllis & David Ritvo

Richard & Susan Seeley

Nancy Turak & Marc Davis

Phyllis Zisman

Fran Alexander in memory of Ernie Alexander

Odette Blachman in memory of Yahya Mayeri

Stephen Blum & Lorraine Midanik

Jeff & Susan Brand with thanks to Ruth Spear

Barbara Fierer & Bob Brandfon in memory of Osna Kuby Fierer

Steven & Kate Goode in honor of Barry & Erica Goode

Kenneth & Kathie Goode in honor of Barry & Erica Goode

Neil & Jane Levy in honor of Ruth Spear

Anna Mantell & Bob Goldstein in honor of the wedding of Fran Mantell

& Benjamin Dinehart

MARIAN MAGID FUND

Albert Magid

Jean Henderson in memory of Marilyn Hemmings

MITZVAH FUND

Marjorie Kirk

MUSIC FUND

Leyna Bernstein & Brian Parker in honor of Alan & Paula Statmans's

25th anniversary

Nancy Gordon & Ken Kirsch in memory of Samuel Gordon

Rabbi Richard & Nancy Litvak in honor of Alan & Paula Statmans's 25th

anniversary

NURSERY SCHOOL FUND

David & Nurit Garner in memory of John Garner

ONEG/KIDDISH FUND

Karen & Joel Zeldin

Barbara Gordon & Peter Kane in memory of Sam V. Gordon

Steven Joseph & Corey Hansen-Joseph in memory of Sol Joseph &

Belle Rosenstein Joseph

Nancy Turak & Marc Davis in honor of Emma Gobler being called to

the Torah as a Bat Mitzvah

RABBI YOEL KAHN'S DISCRETIONARY FUND

Anonymous

Seymour & Hilda Kessler

Gary & Lois Marcus in memory of Mose Marcus

The Mayeri Family in appreciation of Rabbi Kahn

Nancy Turak & Marc Davis in honor of the marriage of Adrienne Cohn

& James duBois

RABBI VIDA LIBRARY FUND

Maxim Schrogin & Karin Harber

SOCIAL ACTION FUND

Nancy Turak & Marc Davis in memory of Gloria Vine

TORAH RESTORATION FUND

Regina Schien

YOUTH & FAMILY EDUCATION FUND

Sinai Memorial Chapel

Janet Byron in honor of Rabbi Bridget Wynne and her son, Avi

Mina Gobler in honor of her granddaughter, Emma Gobler being

called to the Torah as a Bat Mitzvah

ANNUAL CAMPAIGN 5771 THANK YOU!

We want to gratefully acknowledge our members who have already generously contributed to our annual appeal. On behalf of our congregational leadership, we want to thank each of you for your participation in and support for Beth El - for your involvement, for your ideas and energy, and for your commitment to the future of our synagogue. Our entire community appreciates your ongoing generosity.

Your gift to our 5771 Annual Fund enables us to provide the diversity and quality of programs we cherish, and will ensure that Beth El remains welcoming to all who wish to join us, even in the toughest of economic times.

Please join us in the mitzvah of tzedakah through your financial contribution and together we will meet our goals.

Daniel & Nancy Altman
Susan Amdur
Adele Amodeo
Homayoun Arjmand
Michael & Susan Austin
Leyna Bernstein & Brian Parker
Angela Botelho & Barry Silverblatt
Judy Chess
Dubinsky Family
Merle & Michael Fajans
Bill Falik & Diana Cohen
Alison Fisher & Matt Oshry
Kathryn Frank & James Blume
Matthew & Lisa Friedman
John Hartog & Maggie Hand
Seth Kaufman & Tatiana Roegiers
Patrick & Julie Kennedy
Alicia Klein & Kellee Fong
Bob & Sara Kupor
Michael & Barbara Liepman
Debbie & Jeff Leon
Jim Offel & Nancy Lewin-Offel
Pledger Family
Rabbi Ferenc & Paula Raj
Leslie Reckler & Cameron Moore
Amy Resner & William Lee
Mayer & Linda Riff
Isaiah Roter & Trina Ostrander
Marcel & Margrit Schurman
Robert Sonderegger & Joanna Moss
Alan & Paula Statman
Paul Steckel & Mo Morris
Jed Waldman



KICK-OFF EVENT FOR PROJECT RECONNECTIONS AT BETH EL

Sunday, February 6 • 9:30 am - 2:00 pm

Project Reconnections will be a year long series of meetings and events for a select cohort of Beth El members interested in developing the necessary skills for engaging in effective dialogue about Israel. The kick off event will be an introduction to the goals, objectives and methods of Project Reconnections and the Year of Civil Discourse. It is open to all Beth El members. Anyone interested in learning more about the Year of Civil Discourse, or possibly participating in Project Reconnections, is encouraged to join us. The program will begin at 9:30 am with a light brunch and will be followed by a series of presentations and break-out sessions on dialogue and compassionate listening. We will conclude by 1:00 pm, in plenty of time for Super Bowl kickoff.

Dialogue and Disagreement in the Jewish Tradition

Wednesday evening, February 9 • 7:00 pm

Rabbi Sheldon Lewis, Rabbi Emeritus of Congregation Kol Emeth in Palo Alto, will offer a class on the honored place of respectful dialogue in the Jewish religious tradition. This class is offered by the JCRC as part of the Year of Civil Discourse and is open to the entire community.

שמע! SH'MA!

Want to get acquainted with fellow members of Beth El?
Please join us in our

LISTENING CAMPAIGN

A Community Organizing Process

Attend our next meeting:

Thursday, January 27

at 7:00 pm in the Beit Midrash

Volunteers Needed

Volunteers are the life blood of Congregation Beth El and our Volunteer Coordinator, Laurie Juengert needs your help! The Volunteer Committee will connect congregants and their much needed skills to ongoing and one time activities at Beth El. The Committee needs a database guru and other members to coordinate and organize our efforts to make volunteering an exciting and rewarding activity for everyone.

Please contact Laurie Juengert at 510-919-3687 if you are interested in joining. Long meetings, frequent meetings and boring meetings will be avoided. Be a part of organizing our community's efforts and making sure we are tapping the talents of everyone who wants to volunteer their time!



Shoey Sindel
PHOTOGRAPHY

Bar and Bat Mitzvah Expert

Trust your memories to a professional member of your Beth El Family.

Beth El Members
Receive 10% Discount

www.shoeyindel.com
510-917-0659



TORAH STUDY

Meets Shabbat Morning (Saturday)
in the Beit Midrash at 9:15am

January 1, 2011

Parashat Vaera
Exodus 6:2-9:35

Led by Katherine Haynes Sanstad

January 8, 2011

Parashat Bo
Exodus 10:1-13:16
Led by Scott Spear

January 15, 2011

Parashat Beshalach
Exodus 13:17-17:16
Led by Stu Berman

January 22, 2011

Parashat Yitro
Exodus 18:1-20:23
Led by Miriam Schiffman

January 29, 2011

Parashat Mishpatim
Exodus 21:1-24:18
Led by Alisa Einwohner

February 5, 2011

Parashat Terumah
Exodus 25:1-27:19
Led by Laurie Juengert

February 12, 2011

Parashat Tetzaveh
Exodus 27:20-30:10
Led by Rabbi Yoel Kahn

February 19, 2011

Parashat Ki Tasa
Exodus 30:11-34:35
Led by Rich Aptaker

February 26, 2011

Parashat Vayakhel
Exodus 35:31-38:20
Led by Joanne Backman



MIDRASHA

It's hard to believe that an entire semester has passed at Midrasha. Highlights have been our first retreat of the year, combining 9-12th graders at Walker Creek Ranch. We had special 8th grade programs on homelessness and disabilities. Our nature class went hiking. Our class called "The Shabbat Experiment" with Anna Martin made sleeping bags for their cell phones to encourage students to put them aside for Shabbat. And Noemi Hollander taught a class on Wikileaks, framing the conversation around lashon hara (gossip) and rechilut (tale-bearing).

Now it's time to gear up for our new semester, which begins on Sunday, January 9. Remember that students can enroll at Midrasha at any time and the beginning of the semester is a perfect time. If you know teens (or have one in your house) who may have been reluctant to enroll in September because they thought they would be too busy, try to push them out the door and into our program now.

Besides many of our continuing classes, we have some great new classes next semester. Our long-time art teacher, Bunny Pearlman, has retired and moved to New Jersey. Her place is being taken by Alice Pennes, who has been the Art Director at Camp Newman for the past few summers. She will be teaching "Hineni: Finding Yourself in the Tanach" which will use drawing, painting and collage to combine the student's personal identity with the identities of people in the Tanach and another class called "Middot Mobiles" where students will represent different character aspects as part of a 3D sculpture. Day Schildkret has been working on a book reflecting the teaching he has been doing with teens, covering topics such as relationships, loves, the act of choosing, judgments, opinions and the meaning of life and he will be using this class as his test audience. Debra Marx will be teaching Jewish Medical Ethics, covering topics such as euthanasia, transplants, tissue donation and abortion and another talking about the concept of guilt, using both personal stories and a book by Ruth Andrew Ellenson, "A Jewish Girl's Guide to Guilt." Noemi Hollander will be teaching curriculum from the Jewish Women's Archive on "Jews in the Civil Rights Movement" which we piloted last spring and also renewing her ever-popular "P, B & J: Picture Books and Judaism" where students find Jewish values in their favorite children's books. Erica Crowell Altobelli is teaching a Tikkun Olam class based on the Kiva project where students collect money and use it to make micro-loans to deserving projects. Israeli Dance with Sacha Kopin is returning as well as "Yoga and Judaism" classes with both Sacha and Beth Midanik-Blum. Beth is also teaching a class on "A Historical and Modern Look at Jewish Relationships." And Day Schildkret is looking at "Exploring today's LGBTQQI Struggle from a Biblical Perspective." Anna Martin will be teaching "The History of Anti-Semitism."

We'll have two midweek classes. Our Monday afternoon Tanach class with David Henkin, meeting with David Henkin, continues.

Congregation Beth El Adult Education presents...

Lunch & Learn Series

"Chai" ...in pursuit of Life Long Learning

Second Thursday of each month - 12:00 to 1:30 pm
Check out our exciting winter line up!

January 13, 2011 • 12:00 pm

Lublin, Poland: Through My Window

Follow our presenter, Robinn Magid, on her travels to Lublin, Poland to seek out her familial roots..

An active member of the San Francisco Bay Area Jewish Genealogical Society, Robinn is also a Board Member of Jewish Records Indexing – Poland.

February 10, 2011 • 12:00 pm

Social and Ethical Dimensions of Plant Technology

A presentation by Assaf Zemach, Department of Plant and Microbial Biology, University of California, Berkeley

Please bring a bag lunch. Dessert and drinks will be provided. For more information, please contact Miriam Schiffman at chai@bethelberkeley.org or call 510-749-9687

Lunch and Learn events are open to the entire congregation and community.

Donations can be made to Beth El Adult Education.

And we'll have a brand new class "Jewish Cinema" with Shalom Rosenberg, meeting at Netivot Shalom from 6:00-7:30 pm on Tuesdays. The class will explore the Jewish image on screen, covering topics like assimilation, anti-Semitism and tradition versus progression.

And of course our classes in Jewish Ethics, Jewish Identity, Israel, Jewish Spirituality and Thought, Abraham's Vision, Advanced Hebrew Conversation, Talmud, and Judaism and Nature all continue. Don't you wish you could come?

And please save the date: March 13 will be our brand new Midrashang: Can't Buy Me Love. Details will come soon, but for now, just block off the evening on your calendar for a great, fun evening.

Diane Bernbaum
 Director

It is a Jewish tradition to give *Tzedakah* to commemorate life cycle events and other occasions. Are you celebrating a birthday, engagement, anniversary, baby naming, Bat/Bar Mitzvah or a recovery from illness? These are just a few ideas of appropriate times to commemorate with a donation to Beth El. These tax-deductible donations are greatly appreciated and are a vital financial supplement to support the wonderful variety of programs and activities that we offer at Congregation Beth El. Thank you for your support.

CONGREGATION BETH EL Fund Contributions

This contribution of \$_____ is in Memory of* in Honor of*

*

Please credit the fund checked below:

Contribution

Acknowledge

From:

To:

Address

Address

- | | |
|---|---|
| <input type="checkbox"/> General Fund - Use Where Most Needed | <input type="checkbox"/> Marian Magid Memorial Fund |
| <input type="checkbox"/> Aaron Plishner Children Library | <input type="checkbox"/> Men's Club |
| <input type="checkbox"/> Arjmand Adult Education Fund | <input type="checkbox"/> Mitzvah Committee |
| <input type="checkbox"/> Blachman Emergency Fund | <input type="checkbox"/> Music Fund |
| <input type="checkbox"/> Building Fund | <input type="checkbox"/> Nursery School Fund |
| <input type="checkbox"/> Camp Kee Tov Scholarship Fund | <input type="checkbox"/> Oneg/Kiddush Fund |
| <input type="checkbox"/> Chevra Kadisha Fund | <input type="checkbox"/> Prayerbook Fund |
| <input type="checkbox"/> David Cotton Memorial Swig Fund | <input type="checkbox"/> Rabbi's Kahn's Discretionary Fund |
| <input type="checkbox"/> Ellen Meyer Childcare Fund | <input type="checkbox"/> Rabbi Emeritus' Raj's Discretionary Fund |
| <input type="checkbox"/> Endowment Fund | <input type="checkbox"/> Rabbi Vida Library Fund |
| <input type="checkbox"/> Freed Flower Fund | <input type="checkbox"/> Religious School Fund |
| <input type="checkbox"/> Homeless Meal Program | <input type="checkbox"/> Social Action Fund |
| <input type="checkbox"/> Israel Scholarship Fund | <input type="checkbox"/> Youth Groups Fund |
| <input type="checkbox"/> Bar Lev Landscape Fund | <input type="checkbox"/> _____ |

Thank you for your generosity. Please make checks payable to Congregation Beth El and mail to 1301 Oxford Street, Berkeley, CA 94709

January 2011 / Tevet - Shevat 5771

Sunday	Monday	Tuesday	Wednesday	Thursday	Friday	Saturday
NS - Nursery School YAFE - Youth and Family Education						1 NEW YEARS DAY 8:30a Early Minyan 9:15a Torah Study 10:15a Shabbat Morning Service
2 10:00a Roots & Branches Class	3 9:30a Baby Playgroup	4 7:00p Board Meeting	5	6	7 7:00p BEY Lounge Night/Movie Night 8:00p Shabbat Evening Service	8 8:30a Early Minyan 9:15a Torah Study 10:15a Shabbat Morning Service 11:00a Shabbat Tot Morning Services
9 10:00a Roots & Branches Class	10 9:30a Baby Playgroup	11 5:30p Education "Coffee Talks" 6:15p Madrachim Training 6:30 NS Committee 7:00p Adult Edu. Committee Mtg. 7:30p Ritual Committee Mtg.	12 7:30p NS Information Evening	13 12:00p Lunch & Learn Series 7:00p Youth Committee Meeting	14 6:15p Shabbat Evening Service 6:15p Shabbat Unplugged Dinner 7:00p Shabbat Unplugged Service	15 8:30a Early Minyan 9:15a Torah Study 10:15a Shabbat Morning Service Bat Mitzvah - Rudy Brandt 1:00p B'nai Mitzvah Family Meeting
16 10:00a Roots & Branches Class 2:00p Homeless Meal - Medical Clinic 5:00p Homeless Meal	17 MARTIN LUTHER KING DAY Office & Schools Closed	18 11:00a Computer Class 7:15p Program Council	19 6:00p Finance Committee Meeting 6:00p Tu B'Shevat Seder at the JCC 7:30p House Committee Meeting 7:30p Lehrhaus/Intro to Jewish Exper.	20 TU B'SHEVAT 6:15p Kadima Teach Team Meeting 7:00p How to Chant Torah Class	21 6:15p Shabbat Evening Service	22 8:30a Early Minyan 9:15a Torah Study 10:15a Shabbat Morning Service Adult Bar Mitzvah - Albert Magid 1:00p Ruach - Photo Scavenger Hunt
23 B'nai Mitzvah Service Learning 10:00a Roots & Branches Class 30 10:00a Roots & Branches Class 1:00p Strat. Planning Implementation Workshop	24 9:30a Baby Playgroup 31 9:30a Baby Playgroup	25 6:30p 6th Grade Family Program 7:30p Executive Committee	26 7:00p Lehrhaus/Beg. Modern Hebrew 7:30p Lehrhaus/Intro to Jewish Exper. 8:25p Lehrhaus/Int. Modern Hebrew	27 7:00p Listening Campaign 7:00p How to Chant Torah Class	28 6:15p Shabbat Evening Service	29 8:30a Early Minyan 9:15a Torah Study 10:15a Shabbat Morning Service Honoring Francisco Andrade

Congregation Beth El

1301 Oxford Street • Berkeley, CA 94709-1424

Main Phone Number (510) 848-3988 *** Fax (510) 848-2707

Religious School Office Direct Line (510) 848-2122

Nursery School Office Direct Line (510) 848-9428

Camp Kee Tov Office Direct Line (510) 848-2372

Midrasha Direct Line (510) 843-4667

Clergy & Staff	Ext.	Direct Line	Email Address
Rabbi Yoel H. Kahn	215		rabbikahn@bethelberkeley.org
Rabbi Reuben Zellman, Asst. Rabbi & Music Director	228		reuben@bethelberkeley.org
Norm Frankel, Executive Director	212		norm@bethelberkeley.org
Debra Sagan Massey, Director of Education	213	848-2122	debra@bethelberkeley.org
Barbara Kanter, Nursery School Director	219	848-9428	barbara@bethelberkeley.org
Zach Landres-Schnur, Camp Kee Tov Director	217	848-2372	zach@bethelberkeley.org
Laura Adams, Accounting	210		laura@bethelberkeley.org
Diane Bernbaum, Midrasha Director		843-4667	diane@midrasha.org
Odette Blachman, Gift Shop	240		oblachman@sbcglobal.net
Rebecca DePalma, RS Admin. Coordinator	214	848-2122	rebecca@bethelberkeley.org
Mandy Katz, Admin. Coordinator	235		mandy@bethelberkeley.org
Lenora O'Keith, Main Office	211		lenora@bethelberkeley.org
Stephanie Pollick, Kee Tov Admin. Coordinator	223	848-2372	stephanie@bethelberkeley.org
Rabbi Ferenc Raj, Rabbi Emeritus			ferenc@bethelberkeley.org



THE BUILDER Issue No. 125

Congregation Beth El is a member of
The Union for Reform Judaism

1301 Oxford Street, Berkeley CA 94709-1424
510-848-3988 • www.bethelberkeley.org



February 2011 / Shevat - Adar I 5771

Sunday	Monday	Tuesday	Wednesday	Thursday	Friday	Saturday
<p>NS - Nursery School</p> <p>YAFE - Youth and Family Education</p>		<p>1 7:00p Board Meeting</p>	<p>2 7:00p Ba'alei Tefilah (Service Leaders) Workshop</p> <p>7:00p Lehrhaus/Beg. Modern Hebrew</p> <p>7:30p Lehrhaus/Intro to Jewish Exper.</p> <p>8:25p Lehrhaus/Int. Modern Hebrew</p>	<p>3 6:15p Sababa Ski Trip Meeting for Parents & Kids</p> <p>6:30p 5th Grade - B'nai Mitzvah Dates</p> <p>7:00p How to Chant Torah Class</p>	<p>4 8:00p Shabbat Evening Service</p>	<p>5 8:30a Early Minyan</p> <p>9:15a Torah Study</p> <p>10:15a Shabbat Morning Service</p> <p>11:00a Shabbat Tot Morning Services</p>
<p>6 6:00a Sababa Ski/Snowboard Trip</p> <p>9:30a Project Reconnections Kick-off Event</p>	<p>7 9:30a Baby Playgroup</p>	<p>8 6:30 NS Committee</p> <p>7:00p Adult Edu. Committee Mtg.</p> <p>7:30p Ritual Committee Mtg.</p>	<p>9 7:00p Text Study on Civil Discourse</p> <p>7:00p Lehrhaus/Beg. Modern Hebrew</p> <p>7:30p Lehrhaus/Intro to Jewish Exper.</p> <p>8:25p Lehrhaus/Int. Modern Hebrew</p>	<p>10 12:00p Lunch & Learn Series</p> <p>7:00p How to Chant Torah Class</p>	<p>11 8:00p Raj Library Dedication & WUPJ Shabbat</p> <p>6:15p 7th Grade Shabbat Dinner</p>	<p>12 8:30a Early Minyan</p> <p>9:15a Torah Study</p> <p>10:15a Shabbat Morning Service</p> <p>Bat Mitzvah - Samantha Resnik</p> <p>1:00p B'nai Mitzvah Family Meeting</p>
<p>13 10:00a Roots & Branches Class</p>	<p>14 9:30a Baby Playgroup</p>	<p>15 7:15p Program Council</p> <p>8:00p Education Committee Mtg.</p>	<p>16 6:00p Finance Committee</p>	<p>17 6:15p Kadima Teach Team Meeting</p> <p>7:00p How to Chant Torah Class</p> <p>7:00p Youth Committee Meeting</p>	<p>18 6:15p Shabbat Evening Service</p>	<p>19 8:30a Early Minyan</p> <p>9:15a Torah Study</p> <p>10:15a Shabbat Morning Service</p> <p>Bar Mitzvah - Kobi Appel-Bernstein</p>
<p>20 2:00p Homeless Meal - Medical Clinic</p> <p>5:00p Homeless Meal</p>	<p>21 PRESIDENT'S DAY</p> <p>Office & Schools Closed</p>	<p>22 7:30p Executive Committee</p>	<p>23 7:00 Adult Education - Jewish Book Group</p> <p>7:00p Lehrhaus/Beg. Modern Hebrew</p> <p>7:30p Lehrhaus/Intro to Jewish Exper.</p> <p>8:25p Lehrhaus/Int. Modern Hebrew</p>	<p>24 7:00p Listening Campaign</p> <p>7:00p How to Chant Torah Class</p>	<p>25 6:15p Shabbat Evening Service</p>	<p>26 8:30a Early Minyan</p> <p>9:15a Torah Study</p> <p>10:15a Shabbat Morning Service</p> <p>10:15p 6th Grade Shabbat Service & Lunch</p>
<p>27</p>	<p>28 9:30a Baby Playgroup</p>					

CONGREGATION BETH EL

1301 Oxford Street
Berkeley, CA 94709-1424



SUMMER 2011 REGISTRATION NOW OPEN!

Programs for K-9th graders

Music, Sports, Dance, Theater,
Field Trips, Overnights, Camping

Voted Best Jewish Day Camp
the last three years!

Camp Kee Tov Friendships Last A Lifetime!

SESSION 1: JUNE 27 - JULY 22

SESSION 2: AUGUST 1 - AUGUST 26

510.848.2372 | www.campkeetov.org

